



# CoreLine Wall-mounted

## WL121V LED5S/830 PSU MDU GR

CoreLine Wall-mounted, LED Module, system flux 500 lm, 830 warm white, Power supply unit regulating, Movement detection unit, Grey

Whether for a new building or renovation of an existing space, customers want lighting solutions that provide quality of light and substantial energy and maintenance savings. The new CoreLine Wall-mounted range of LED products can be used to replace traditional wall-mounted luminaires incorporating compact fluorescent lamps. The process of selecting, installing and maintaining is so easy – it's a simple switch.

### Product data

General Information		Value ladder	
Lamp family code	LED5S [LED Module, system flux 500 lm]	Embedded control	Performance
Light source replaceable	No	CE mark	Movement detection unit
Number of gear units	1 unit	Warranty period	Yes
Driver included	Yes	Flammability mark	3 years + 2 years upon registration
Remarks	*-Per Lighting Europe guidance paper "Evaluating performance of LED based luminaires - January 2018": statistically there is no relevant difference in lumen maintenance between B50 and for example B10. Therefore, the median useful life (B50) value also represents the B10 value.	ENEC mark	For mounting on normally flammable surfaces
Product family code	WL121V [CoreLine Wall-mounted]	Glow-wire test	ENEC mark
Lighting Technology	LED	EU RoHS compliant	Temperature 850 °C, duration 30 s
		Light Technical	
		Luminous Flux	500 lm
		Correlated Color Temperature (Nom)	3000 K
		Luminous Efficacy (rated) (Nom)	63 lm/W

## CoreLine Wall-mounted

Color rendering index (CRI)	80
Number of light sources	1
Beam angle of light source	120 degree(s)
Light source color	830 warm white
Optic type	Symmetrical
Luminaire light beam spread	180°

### Operating and Electrical

Input Voltage	220 to 240 V
Line Frequency	50 to 60 Hz
Inrush current	4 A
Inrush time	0.37 ms
Power Consumption	8 W
Power Factor (Fraction)	0.95
Connection	Push-in connector and pull relief
Cable	-
Number of products on MCB of 16 A type B	30

### Temperature

Ambient temperature range	0 to +25 °C
---------------------------	-------------

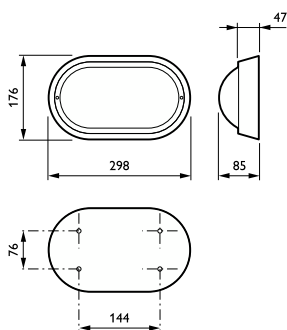
### Controls and Dimming

Dimmable	No
Driver/power unit/transformer	Power supply unit regulating
Control interface	Sensor-based dim
Constant light output	No

### Mechanical and Housing

Housing Material	Composite materials
Reflector material	-
Optic material	Polycarbonate
Optical cover material	Polycarbonate
Fixation material	Polyamide

## Dimensional drawing



Housing Color	Grey
Optical cover finish	Opal
Overall length	298 mm
Overall width	176 mm
Overall height	85 mm
Dimensions (Height x Width x Depth)	85 x 176 x 298 mm

### Approval and Application

Ingress protection code	IP65 [Dust penetration-protected, jet-proof]
Mech. impact protection code	IK10 [20 J vandal-resistant]
Protection class IEC	Safety class I

### Initial Performance (IEC Compliant)

Luminous flux tolerance	+/-10%
Initial chromaticity	(0.43, 0.40) SDCM <3
Power consumption tolerance	+/-10%

### Application Conditions

Performance ambient temperature Tq	25 °C
Maximum dim level	Not applicable
Suitable for random switching	Yes

### Product Data

Order product name	WL121V LED5S/830 PSU MDU GR
Full product name	WL121V LED5S/830 PSU MDU GR
Full product code	871869624287200
Order code	24287200
Material Nr. (12NC)	910500454788
Numerator - Quantity Per Pack	1
EAN/UPC - Product/Case	8718696240908
Numerator - Packs per outer box	1
EAN/UPC - Case	8718696242872

## CoreLine Wall-mounted

