



CoreLine Wall-mounted

WL121V LED5S/840 PSU MDU GR

CoreLine Wall-mounted, LED Module, system flux 500 lm, 840 neutral white, Power supply unit regulating, Movement detection unit, Grey

CoreLine Wall-mounted is a circular-shaped surface-mounted luminaire that is easy to apply in circulation areas such as hallways and staircases. The modern unobtrusive design, in combination with its homogeneous light distribution it delivers, ensures that this luminaire blends into most building architectures. With the push-in connectors, installation is fast and straightforward

Product data

General Information			
Lamp family code	LED5S [LED Module, system flux 500 lm]	Embedded control	Movement detection unit
Light source replaceable	No	CE mark	Yes
Number of gear units	Unit	Warranty period	3 years + 2 years upon registration
Driver included	Yes	Flammability mark	For mounting on normally flammable surfaces
Remarks	*- According to the Lighting Europe guidance paper 'Evaluating performance of LED based luminaires – January 2018': statistically there is no relevant difference in lumen maintenance between the B50 and, for example, the B10. Therefore, the median useful life (B50) value also represents the B10 value.	ENEC mark	ENEC mark
Product family code	WL121V [CoreLine Wall-mounted]	Glow-wire test	Temperature 850 °C, duration 30 s
Lighting Technology	LED	EU RoHS compliant	Yes
Value ladder	Performance	Light Technical	
		Luminous Flux	500 lm
		Correlated Colour Temperature	4000 K
		Luminous efficacy (rated) (nom.)	63 lm/W
		Colour rendering index (CRI)	80
		Beam angle of light source	120 degree(s)

CoreLine Wall-mounted

Light source colour	840 neutral white
Optic type	Symmetrical
Luminaire light beam spread	180°

Operating and Electrical

Input Voltage	220 to 240 V
Line Frequency	50 to 60 Hz
Inrush current	4 A
Inrush time	0.37 ms
Power Consumption	8 W
Power Factor (Fraction)	0.95
Connection	Push-in connector and pull relief
Cable	-
Number of products on MCB of 16 A type B	30

Temperature

Ambient temperature range	0 to +25 °C
---------------------------	-------------

Controls and Dimming

Dimmable	No
Driver/power unit/transformer	Power supply unit regulating
Control interface	Sensor-based dim
Constant light output	No

Mechanical and Housing

Housing material	Composite materials
Reflector material	-
Optic material	Polycarbonate
Optical cover/lens material	Polycarbonate
Fixation material	Polyamide
Housing Colour	Grey
Optical cover/lens finish	Opal

Overall length	298 mm
Overall width	176 mm
Overall height	85 mm
Dimensions (height x width x depth)	85 x 176 x 298 mm

Approval and Application

Ingress protection code	IP65 [Dust penetration-protected, jet-proof]
Mech. impact protection code	IK10 [20 J vandal-resistant]
Protection class IEC	Safety class I

Initial Performance (IEC Compliant)

Luminous flux tolerance	+/-10%
Initial chromaticity	(0.38, 0.38) SDCM <5
Power consumption tolerance	+/-10%

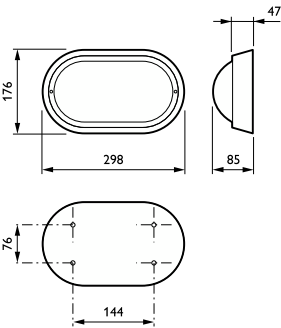
Application Conditions

Performance ambient temperature Tq	25 °C
Maximum dim level	Not applicable
Suitable for random switching	Yes

Product Data

Order product name	WL121V LED5S/840 PSU MDU GR
Full product name	WL121V LED5S/840 PSU MDU GR
Full EOC	871869624289600
Order code	24289600
Material no. (12 NC)	910500454790
SAP numerator – quantity per pack	1
EAN/UPC – Product/Case	8718696240922
Numerator – packs per outer box	1
EAN/UPC - Case	8718696242896

Dimensional drawing



CoreLine Wall-mounted

