



# eW Cove QLX Powercore

BCX423 4000 5.5W L305 MB CE/CCC

4000 K - 60° x 90° - 5.5 W - Medium beam - 305 mm - Gray

eW Cove QLX Powercore represents the next generation of high-quality linear LED cove lighting. This elegant, low-profile fixture delivers a high output of white or solid color light at an affordable price. eW Cove QLX Powercore is designed to replace traditional white cove lighting sources for wall and ceiling glow effects, wall washing, and indirect lighting from a single cove. Multiple color temperatures, solid colors, beam angles, and lengths afford an abundance of design options. Integrated Powercore technology ensures rapid, efficient and accurate control of power output to the fixture directly from line voltage, eliminating the need for external power supplies. Use of standard wiring dramatically simplifies installation and helps lower total system cost.

## Product data

General Information			
Lamp family code	LED-HB [ LED High Brightness]	Glow-wire test	650/5 [ Temperature 650 °C, duration 5 s]
Light source colour	Neutral white	Flammability mark	F [ For mounting on normally flammable surfaces]
Lamp system description	-	Type description	No
Light source replaceable	No	CE mark	CE mark
Driver/power unit/transformer	PSU [ Power supply unit]	ENEC mark	-
Driver included	Yes	CCC mark	CCC mark
Optic type	MB [ Medium beam]	Operating and Electrical	
Optical cover/lens type	PC [ Polycarbonate bowl/cover]	Input Voltage	220 to 240 V
Luminaire light beam spread	60° x 90°	Input frequency	50 to 60 Hz
Protection class IEC	Safety class II (II)		
Ready-to-install	-		

eW Cove QLX Powercore

Controls and Dimming

Dimmable	Yes
----------	-----

Mechanical and Housing

Housing material	Plastic
Optic material	Polycarbonate
Optical cover/lens material	Polycarbonate
Length	305 mm
Colour	Gray

Approval and Application

Ingress protection code	IP20 [ Finger-protected]
Mech. impact protection code	IK00 [ No protection]

Initial Performance (IEC Compliant)

Init. Corr. Colour Temperature	4000 K
Initial input power	5.5 W

Over Time Performance (IEC Compliant)

Median useful life L70B50	75000 h
Median useful life L80B50	44000 h
Median useful life L90B50	17000 h
Lumen Maintenance 70% at 25 °C Calculated	100000
Lumen Maintenance 70% at 25 °C Reported	37000
Lumen Maintenance 70% at 50 °C Calculated	75000
Lumen Maintenance 70% at 50 °C Reported	37000

Lumen Maintenance 80% at 25 °C Calculated	100000
Lumen Maintenance 80% at 25 °C Reported	37000
Lumen Maintenance 80% at 50 °C Calculated	44000
Lumen Maintenance 80% at 50 °C Reported	37000
Lumen Maintenance 90% at 25 °C Calculated	47000
Lumen Maintenance 90% at 25 °C Reported	37000
Lumen Maintenance 90% at 50 °C Calculated	17000
Lumen Maintenance 90% at 50 °C Reported	37000

Application Conditions

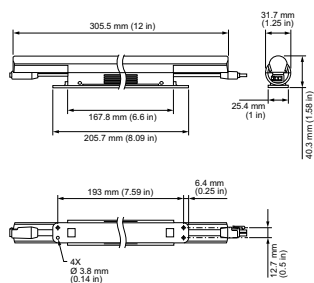
Ambient temperature range	-20 to +50 °C
Suitable for random switching	Yes

Product Data

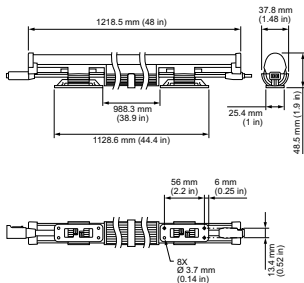
Full product code	871829164309899
Order product name	BCX423 4000 5.5W L305 MB CE/CCC
EAN/UPC – product	8718291643098
Order code	64309899
SAP numerator – quantity per pack	1
Numerator – packs per outer box	25
SAP material	910503705211
Net Weight (Piece)	0.186 kg



Dimensional drawing



Cove



Cove

