



CoreLine Wall-mounted

WL121V LED5S/840 PSU WH

LED Module, system flux 500 lm, 840 neutral white, Power supply unit (On/Off), White

Whether for a new building or renovation of an existing space, customers want lighting solutions that provide quality of light and substantial energy and maintenance savings. The new CoreLine Wall-mounted range of LED products can be used to replace traditional wall-mounted luminaires incorporating compact fluorescent lamps. The process of selecting, installing and maintaining is so easy – it's a simple switch.

Product data

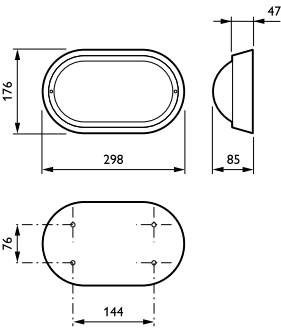
General Information			
Lamp family code	LED5S [LED Module, system flux 500 lm]	Warranty period	3 years + 2 years upon registration
Light source replaceable	No	Flammability mark	For mounting on normally flammable surfaces
Number of gear units	1 unit	ENEC mark	-
Driver included	Yes	Glow-wire test	Temperature 850 °C, duration 30 s
Remarks	*-Per Lighting Europe guidance paper "Evaluating performance of LED based luminaires - January 2018": statistically there is no relevant difference in lumen maintenance between B50 and for example B10. Therefore, the median useful life (B50) value also represents the B10 value.	EU RoHS compliant	Yes
Lighting Technology		Light Technical	
Lighting Technology	LED	Luminous Flux	500 lm
Value ladder	Performance	Correlated Color Temperature (Nom)	4000 K
CE mark	Yes	Luminous Efficacy (rated) (Nom)	63 lm/W
		Color rendering index (CRI)	>80
		Number of light sources	1
		Beam angle of light source	120 degree(s)
		Light source color	840 neutral white
		Optic type	Symmetrical

CoreLine Wall-mounted

Luminaire light beam spread	180°
Operating and Electrical	
Input Voltage	220 to 240 V
Line Frequency	50 to 60 Hz
Inrush current	4 A
Inrush time	0.37 ms
Power Consumption	8 W
Power Factor (Fraction)	0.9
Connection	Push-in connector and pull relief
Cable	-
Number of products on MCB of 16 A type B	30
Temperature	
Ambient temperature range	-20 to +35 °C
Controls and Dimming	
Dimmable	No
Driver/power unit/transformer	Power supply unit (On/Off)
Constant light output	No
Mechanical and Housing	
Housing Material	Composite materials
Reflector material	-
Optic material	Polycarbonate
Optical cover material	Polycarbonate
Fixation material	Polyamide
Housing Color	White
Optical cover finish	Opal
Overall length	298 mm

Overall width	175.8 mm
Overall height	85 mm
Dimensions (Height x Width x Depth)	85 x 176 x 298 mm
Approval and Application	
Ingress protection code	IP65 [Dust penetration-protected, jet-proof]
Mech. impact protection code	IK10 [20 J vandal-resistant]
Protection class IEC	Safety class I
Initial Performance (IEC Compliant)	
Luminous flux tolerance	+/-10%
Initial chromaticity	(0.37, 0.37) SDCM<3
Power consumption tolerance	+/-10%
Application Conditions	
Performance ambient temperature Tq	25 °C
Suitable for random switching	No
Product Data	
Order product name	WL121V LED5S/840 PSU WH
Full product name	WL121V LED5S/840 PSU WH
Full product code	871869606637999
Order code	06637999
Material Nr. (12NC)	910503910014
Numerator - Quantity Per Pack	1
EAN/UPC - Product/Case	8718696066379
Numerator - Packs per outer box	12
EAN/UPC - Case	8718696066492

Dimensional drawing



CoreLine Wall-mounted

