



CoreLine Wall-mounted

WL121V LED5S/840 PSU GR

LED Module, system flux 500 lm, 840 neutral white, Power supply unit (On/Off), Grey

CoreLine Wall-mounted is a circular-shaped surface-mounted luminaire that is easy to apply in circulation areas such as hallways and staircases. The modern unobtrusive design, in combination with its homogeneous light distribution it delivers, ensures that this luminaire blends into most building architectures. With the push-in connectors, installation is fast and straightforward

Product data

General Information			
Lamp family code	LED5S [LED Module, system flux 500 lm]	Flammability mark	For mounting on normally flammable surfaces
Light source replaceable	No	ENEC mark	-
Number of gear units	Unit	Glow-wire test	Temperature 850 °C, duration 30 s
Driver included	Yes	EU RoHS compliant	Yes
Remarks	*- According to the Lighting Europe guidance paper 'Evaluating performance of LED based luminaires – January 2018': statistically there is no relevant difference in lumen maintenance between the B50 and, for example, the B10. Therefore, the median useful life (B50) value also represents the B10 value.		
Lighting Technology		Light Technical	
Value ladder	Performance	Luminous Flux	500 lm
CE mark	Yes	Correlated Colour Temperature	4000 K
Warranty period	3 years + 2 years upon registration	Luminous efficacy (rated) (nom.)	63 lm/W
		Colour rendering index (CRI)	>80
		Beam angle of light source	120 degree(s)
		Light source colour	840 neutral white
		Optic type	Symmetrical
		Luminaire light beam spread	180°

CoreLine Wall-mounted

Operating and Electrical

Input Voltage	220 to 240 V
Line Frequency	50 to 60 Hz
Inrush current	4 A
Inrush time	0.37 ms
Power Consumption	8 W
Power Factor (Fraction)	0.9
Connection	Push-in connector and pull relief
Cable	-
Number of products on MCB of 16 A type B	30

Temperature

Ambient temperature range	-20 to +35 °C
---------------------------	---------------

Controls and Dimming

Dimmable	No
Driver/power unit/transformer	Power supply unit (On/Off)
Constant light output	No

Mechanical and Housing

Housing material	Composite materials
Reflector material	-
Optic material	Polycarbonate
Optical cover/lens material	Polycarbonate
Fixation material	Polyamide
Housing Colour	Grey
Optical cover/lens finish	Opal
Overall length	298 mm
Overall width	175.8 mm

Overall height	85 mm
Dimensions (height x width x depth)	85 x 176 x 298 mm

Approval and Application

Ingress protection code	IP65 [Dust penetration-protected, jet-proof]
Mech. impact protection code	IK10 [20 J vandal-resistant]
Protection class IEC	Safety class I

Initial Performance (IEC Compliant)

Luminous flux tolerance	+/-10%
Initial chromaticity	(0.37, 0.37) SDCM<3
Power consumption tolerance	+/-10%

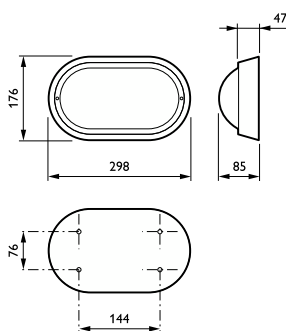
Application Conditions

Performance ambient temperature Tq	25 °C
Suitable for random switching	No

Product Data

Order product name	WL121V LED5S/840 PSU GR
Full product name	WL121V LED5S/840 PSU GR
Full EOC	871869606638699
Order code	06638699
Material no. (12 NC)	910503910015
SAP numerator – quantity per pack	1
EAN/UPC — Product/Case	8718696066386
Numerator – packs per outer box	12
EAN/UPC – Case	8718696066508

Dimensional drawing



CoreLine Wall-mounted

