



CoreLine Wall-mounted

WL121V LED5S/830 PSU WH

CoreLine Wall-mounted, 8 W, 144x76 mm, 500 lm, 3000 K, IP65

Whether for a new building or renovation of an existing space, customers want lighting solutions that provide quality of light and substantial energy and maintenance savings. The new CoreLine Wall-mounted range of LED products can be used to replace traditional wall-mounted luminaires incorporating compact fluorescent lamps. The process of selecting, installing and maintaining is so easy – it's a simple switch.

Product data

General Information			
Lamp family code	LED5S [LED Module, system flux 500 lm]	Flammability mark	For mounting on normally flammable surfaces
Light source replaceable	No	ENEC mark	-
Number of gear units	1 unit	Glow-wire test	Temperature 850 °C, duration 30 s
Driver included	Yes	EU RoHS compliant	Yes
Remarks	*-Per Lighting Europe guidance paper "Evaluating performance of LED based luminaires - January 2018": statistically there is no relevant difference in lumen maintenance between B50 and for example B10. Therefore, the median useful life (B50) value also represents the B10 value.	Light Technical	
Lighting Technology		Luminous Flux	500 lm
Value ladder		Correlated Color Temperature (Nom)	3000 K
CE mark		Luminous Efficacy (rated) (Nom)	63 lm/W
Warranty period		Color rendering index (CRI)	>80
		Number of light sources	1
		Beam angle of light source	120 degree(s)
		Light source color	830 warm white
		Optic type	Symmetrical
		Luminaire light beam spread	180°

CoreLine Wall-mounted

Operating and Electrical

Input Voltage	220 to 240 V
Line Frequency	50 to 60 Hz
Inrush current	4 A
Inrush time	0.37 ms
Power Consumption	8 W
Power Factor (Fraction)	0.9
Connection	Push-in connector and pull relief
Cable	-
Number of products on MCB of 16 A type B	30

Temperature

Ambient temperature range	-20 to +35 °C
---------------------------	---------------

Controls and Dimming

Dimmable	No
Driver/power unit/transformer	Power supply unit (On/Off)
Constant light output	No

Mechanical and Housing

Housing Material	Composite materials
Reflector material	-
Optic material	Polycarbonate
Optical cover material	Polycarbonate
Fixation material	Polyamide
Housing Color	White
Optical cover finish	Opal
Overall length	298 mm
Overall width	175.8 mm

Overall height	85 mm
Dimensions (Height x Width x Depth)	85 x 176 x 298 mm

Approval and Application

Ingress protection code	IP65 [Dust penetration-protected, jet-proof]
Mech. impact protection code	IK10 [20 J vandal-resistant]
Protection class IEC	Safety class I

Initial Performance (IEC Compliant)

Luminous flux tolerance	+/-10%
Initial chromaticity	(0.47, 0.42) SDCM<3
Power consumption tolerance	+/-10%

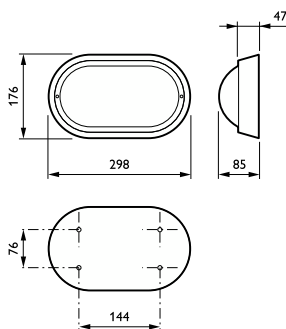
Application Conditions

Performance ambient temperature Tq	25 °C
Suitable for random switching	No

Product Data

Order product name	WL121V LED5S/830 PSU WH
Full product name	WL121V LED5S/830 PSU WH
Full product code	871869606643099
Order code	910503910020
Material Nr. (12NC)	910503910020
Numerator - Quantity Per Pack	1
EAN/UPC - Product/Case	8718696066430
Numerator - Packs per outer box	12
EAN/UPC - Case	8718696066553

Dimensional drawing



CoreLine Wall-mounted

