



CoreLine Wall-mounted

WL121V LED5S/830 PSU WH

CoreLine Wall-mounted, 8 W, 144x76 mm, 500 lm, 3000 K, IP65

CoreLine wall-mounted solutions deliver on the CoreLine promise of innovative, easy-to-install and high quality luminaires. These circular-shaped, surface-mounted luminaires are suitable for both ceiling and wall installations and are easy to apply in circulation areas such as corridors, hallways and staircases. The modern, unobtrusive design, combined with a homogeneous light distribution, ensures this luminaire will blend into the architecture of most buildings. And thanks to the push-in connectors, installation of the CoreLine WL140V is fast and straightforward. This family includes Interact ready luminaires with integrated wireless communications, ready for use with Interact gateways, sensors and software.

Product data

| General Information | | | |
|--------------------------|--|------------------------------------|---|
| Lamp family code | LED5S [LED Module, system flux 500 lm] | Glow-wire test | Temperature 850 °C, duration 30 s |
| Light source replaceable | No | Flammability mark | For mounting on normally flammable surfaces |
| Number of gear units | 1 unit | CE mark | Yes |
| Driver included | Yes | ENEC mark | - |
| Remarks | *-Per Lighting Europe guidance paper "Evaluating performance of LED based luminaires - January 2018": statistically there is no relevant difference in lumen maintenance between B50 and for example B10. Therefore, the median useful life (B50) value also represents the B10 value. | Warranty period | 3 years + 2 years upon registration |
| | | EU RoHS compliant | Yes |
| | | Value ladder | Performance |
| Lighting Technology | LED | Light Technical | |
| | | Luminous Flux | 500 lm |
| | | Correlated Color Temperature (Nom) | 3000 K |
| | | Luminous Efficacy (rated) (Nom) | 63 lm/W |
| | | Color rendering index (CRI) | >80 |

CoreLine Wall-mounted

| | |
|-----------------------------|----------------|
| Number of light sources | 1 |
| Beam angle of light source | 120 degree(s) |
| Light source color | 830 warm white |
| Optic type | Symmetrical |
| Luminaire light beam spread | 180° |

Operating and Electrical

| | |
|--|-----------------------------------|
| Input Voltage | 220 to 240 V |
| Line Frequency | 50 to 60 Hz |
| Inrush current | 4 A |
| Inrush time | 0.37 ms |
| Power Consumption | 8 W |
| Power Factor (Fraction) | 0.9 |
| Connection | Push-in connector and pull relief |
| Cable | - |
| Number of products on MCB of 16 A type B | 30 |

Temperature

| | |
|---------------------------|---------------|
| Ambient temperature range | -20 to +35 °C |
|---------------------------|---------------|

Controls and Dimming

| | |
|-------------------------------|----------------------------|
| Dimmable | No |
| Driver/power unit/transformer | Power supply unit (On/Off) |
| Constant light output | No |

Mechanical and Housing

| | |
|------------------------|---------------------|
| Housing Material | Composite materials |
| Reflector material | - |
| Optic material | Polycarbonate |
| Optical cover material | Polycarbonate |
| Fixation material | Polyamide |
| Housing Color | White |

| | |
|-------------------------------------|-------------------|
| Optical cover finish | Opal |
| Overall length | 298 mm |
| Overall width | 175.8 mm |
| Overall height | 85 mm |
| Dimensions (Height x Width x Depth) | 85 x 176 x 298 mm |

Approval and Application

| | |
|------------------------------|--|
| Ingress protection code | IP65 [Dust penetration-protected, jet-proof] |
| Mech. impact protection code | IK10 [20 J vandal-resistant] |
| Protection class IEC | Safety class I |

Initial Performance (IEC Compliant)

| | |
|-----------------------------|---------------------|
| Luminous flux tolerance | +/-10% |
| Initial chromaticity | (0.47, 0.42) SDCM<3 |
| Power consumption tolerance | +/-10% |

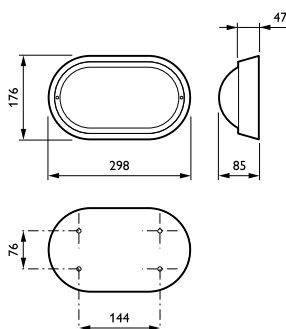
Application Conditions

| | |
|------------------------------------|-------|
| Performance ambient temperature Tq | 25 °C |
| Suitable for random switching | No |

Product Data

| | |
|---------------------------------|-------------------------|
| Order product name | WL121V LED5S/830 PSU WH |
| Full product name | WL121V LED5S/830 PSU WH |
| Full product code | 871869606643099 |
| Order code | 910503910020 |
| Material Nr. (12NC) | 910503910020 |
| Numerator - Quantity Per Pack | 1 |
| EAN/UPC - Product/Case | 8718696066430 |
| Numerator - Packs per outer box | 12 |
| EAN/UPC - Case | 8718696066553 |

Dimensional drawing



CoreLine Wall-mounted

