



CoreLine Wall-mounted

WL121V LED5S/830 PSU GR

LED Module, system flux 500 lm, 830 warm white, Power supply unit (On/Off), Grey

CoreLine wall-mounted solutions deliver on the CoreLine promise of innovative, easy-to-install and high quality luminaires. These circular-shaped, surface-mounted luminaires are suitable for both ceiling and wall installations and are easy to apply in circulation areas such as corridors, hallways and staircases. The modern, unobtrusive design, combined with a homogeneous light distribution, ensures this luminaire will blend into the architecture of most buildings. And thanks to the push-in connectors, installation of the CoreLine WL140V is fast and straightforward. This family includes Interact ready luminaires with integrated wireless communications, ready for use with Interact gateways, sensors and software.

Product data

General Information		Lighting Technology	
Lamp family code	LED5S [LED Module, system flux 500 lm]	Glow-wire test	Temperature 850 °C, duration 30 s
Light source replaceable	No	Flammability mark	For mounting on normally flammable surfaces
Number of gear units	1 unit	CE mark	Yes
Driver included	Yes	ENEC mark	-
Remarks	*-Per Lighting Europe guidance paper "Evaluating performance of LED based luminaires - January 2018": statistically there is no relevant difference in lumen maintenance between B50 and for example B10. Therefore, the median useful life (B50) value also represents the B10 value.	Warranty period	3 years + 2 years upon registration
		EU RoHS compliant	Yes
		Value ladder	Performance
Light Technical			
		Luminous Flux	500 lm
		Correlated Color Temperature (Nom)	3000 K

CoreLine Wall-mounted

Luminous Efficacy (rated) (Nom)	63 lm/W
Color rendering index (CRI)	>80
Number of light sources	1
Beam angle of light source	120 degree(s)
Light source color	830 warm white
Optic type	Symmetrical
Luminaire light beam spread	180°

Operating and Electrical

Input Voltage	220 to 240 V
Line Frequency	50 to 60 Hz
Inrush current	4 A
Inrush time	0.37 ms
Power Consumption	8 W
Power Factor (Fraction)	0.9
Connection	Push-in connector and pull relief
Cable	-
Number of products on MCB of 16 A type B	30

Temperature

Ambient temperature range	-20 to +35 °C
---------------------------	---------------

Controls and Dimming

Dimmable	No
Driver/power unit/transformer	Power supply unit (On/Off)
Constant light output	No

Mechanical and Housing

Housing Material	Composite materials
Reflector material	-
Optic material	Polycarbonate
Optical cover material	Polycarbonate
Fixation material	Polyamide

Housing Color	Grey
Optical cover finish	Opal
Overall length	298 mm
Overall width	175.8 mm
Overall height	85 mm
Dimensions (Height x Width x Depth)	85 x 176 x 298 mm

Approval and Application

Ingress protection code	IP65 [Dust penetration-protected, jet-proof]
Mech. impact protection code	IK10 [20 J vandal-resistant]
Protection class IEC	Safety class I

Initial Performance (IEC Compliant)

Luminous flux tolerance	+/-10%
Initial chromaticity	(0.47, 0.42) SDCM<3
Power consumption tolerance	+/-10%

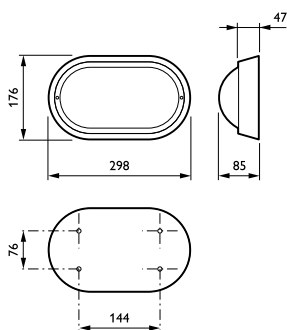
Application Conditions

Performance ambient temperature Tq	25 °C
Suitable for random switching	No

Product Data

Order product name	WL121V LED5S/830 PSU GR
Full product name	WL121V LED5S/830 PSU GR
Full product code	871869606644799
Order code	910503910021
Material Nr. (12NC)	910503910021
Numerator - Quantity Per Pack	1
EAN/UPC - Product/Case	8718696066447
Numerator - Packs per outer box	12
EAN/UPC - Case	8718696066560

Dimensional drawing



CoreLine Wall-mounted

