



Maxos TL5, trapeze reflectors and optics

4MX692 1/2 54 T-MB SI

MAXOS R T5, 54 W

The sturdy trapeze reflectors for TL5 are designed first for applications in supermarkets, shops and industry. They are made of steel, with a white or silver finish. The reflectors are made for electrical units holding one or two TL5 lamps 54, 49 or 80 W and provide an excellent light output ratio. There are basic trapeze reflectors without an additional mirror inlay and trapeze reflectors with dedicated aluminum mirror inlays. These are designed for narrow-beam or medium-beam light distributions, asymmetrical wall-washing light distribution on request. Moreover perforated reflectors giving a more airy design and slotted trapeze reflectors (without mirror inlays) can be ordered to create an indirect uplighting effect. For glare reduction, the trapeze reflector can be equipped with a white steel louver (L-T). The reflectors are fixed to the electrical units via a simple click-in. The reflectors can be connected to each other in a line with a connection piece at one end of the reflector coming with the reflector. End plates for the beginning and the end of the light line, are available as accessories.

Product data

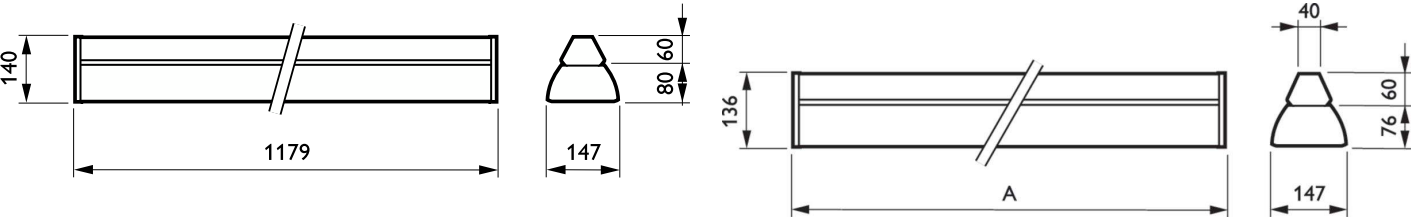
General Information		Approval and Application	
Accessory color	Silver	Ingress protection code	IP20 [Finger-protected]
Product family code	4MX692 [MAXOS R T5]	Product Data	
Operating and Electrical		Order product name	4MX692 1/2 54 T-MB SI
Power Consumption	54 W	Full product name	4MX692 1/2 54 T-MB SI
		Full product code	403073263509299
		Order code	63509299

Maxos TL5, trapeze reflectors and optics

Material Nr. (12NC)	910605125026
Numerator - Quantity Per Pack	1
EAN/UPC - Product/Case	4030732635092
Numerator - Packs per outer box	6

EAN/UPC - Case	4030732230266
----------------	---------------

Dimensional drawing



Product

4MX692 1/2 54 T-MB SI

