



# Maxos TL5, trapeze reflectors and optics

4MX692 1/2 49 T-MB WH

MAXOS R T5, 49 W

The sturdy trapeze reflectors for TL5 are designed first for applications in supermarkets, shops and industry. They are made of steel, with a white or silver finish. The reflectors are made for electrical units holding one or two TL5 lamps 54, 49 or 80 W and provide an excellent light output ratio. There are basic trapeze reflectors without an additional mirror inlay and trapeze reflectors with dedicated aluminum mirror inlays. These are designed for narrow-beam or medium-beam light distributions, asymmetrical wall-washing light distribution on request. Moreover perforated reflectors giving a more airy design and slotted trapeze reflectors (without mirror inlays) can be ordered to create an indirect uplighting effect. For glare reduction, the trapeze reflector can be equipped with a white steel louver (L-T). The reflectors are fixed to the electrical units via a simple click-in. The reflectors can be connected to each other in a line with a connection piece at one end of the reflector coming with the reflector. End plates for the beginning and the end of the light line, are available as accessories.

## Product data

General Information	
Accessory color	White
Product family code	4MX692 [MAXOS R T5]
Operating and Electrical	
Power Consumption	49 W

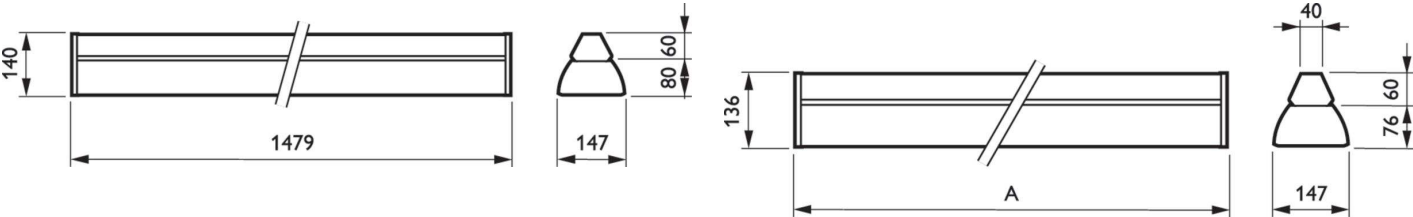
Approval and Application	
Ingress protection code	IP20 [Finger-protected]
Product Data	
Order product name	4MX692 1/2 49 T-MB WH
Full product name	4MX692 1/2 49 T-MB WH
Full product code	403073263511599
Order code	910605125226

Maxos TL5, trapeze reflectors and optics

Material Nr. (12NC)	910605125226
Numerator - Quantity Per Pack	1
EAN/UPC - Product/Case	4030732635115
Numerator - Packs per outer box	6

EAN/UPC - Case	4030732230280
----------------	---------------

Dimensional drawing



Product
4MX692 1/2 49 T-MB WH

