



CoreLine Trunking

LL121X LED45S/840 1x PSD DA20 7 WH

CoreLine Trunking, LED Module, system flux 4500 lm, Power supply unit with DALI interface, Double asymmetric optic 20°

Whether for a new facility or renovation of an existing space, customers want lighting solutions that provide quality of light and substantial energy and maintenance savings. The new CoreLine Trunking range of LED products can be used to replace general lighting. The process of selecting, installing and maintaining is so easy – it's a simple switch.

Product data

General Information			
Lamp family code	LED45S [LED Module, system flux 4500 lm]	Flammability mark	For mounting on normally flammable surfaces
Light source replaceable	No	ENEC mark	ENEC mark
Number of gear units	Unit	Glow-wire test	Temperature 650 °C, duration 5 s
Driver included	Yes	EU RoHS compliant	Yes
Feed-through wiring	Feed-through wiring 7-phase	Light Technical	
Remarks	*- According to the Lighting Europe guidance paper 'Evaluating performance of LED based luminaires – January 2018': statistically there is no relevant difference in lumen maintenance between the B50 and, for example, the B10. Therefore, the median useful life (B50) value also represents the B10 value.	Luminous Flux	4,500 lm
Product family code	LL121X [CoreLine Trunking]	Correlated Colour Temperature	4000 K
Lighting Technology	LED	Luminous efficacy (rated) (nom.)	141 lm/W
CE mark	Yes	Colour rendering index (CRI)	≥80
Warranty period	3 years	Beam angle of light source	120 degree(s)
		Light source colour	840 neutral white
		Optic type	Double asymmetric optic 20°
		Optical cover type	-
		Luminaire light beam spread	86° x 80°
		Unified Glare Rating (CEN)	Not applicable

CoreLine Trunking

Operating and Electrical

Input Voltage	220 to 240 V
Line Frequency	50 to 60 Hz
Inrush current	22 A
Inrush time	0.275 ms
Power Consumption	32 W
Power Factor (Fraction)	0.95
Connection	Connection unit 7-pole
Cable	-
Number of products on MCB of 16 A type B	24

Temperature

Ambient temperature range	-20 to +35 °C
---------------------------	---------------

Controls and Dimming

Dimmable	Yes
Driver/power unit/transformer	Power supply unit with DALI interface
Control interface	DALI
Constant light output	No

Mechanical and Housing

Housing material	Steel
Reflector material	-
Optic material	Acrylate
Optical cover/lens material	Acrylate
Fixation material	Steel
Housing Colour	White
Optical cover/lens finish	Clear
Overall length	1,730 mm
Overall width	95 mm
Overall height	52 mm
Dimensions (height x width x depth)	52 x 95 x 1730 mm

Approval and Application

Ingress protection code	IP20 [Finger-protected]
Mech. impact protection code	IK02 [0.2 J standard]
Protection class IEC	Safety class I

Initial Performance (IEC Compliant)

Luminous flux tolerance	+/-7%
Initial chromaticity	(0.38, 0.38) SDCM <3
Power consumption tolerance	+/-11%

Over Time Performance (IEC Compliant)

Control gear failure rate at median useful life 50,000 h	5 %
Lumen maintenance at median useful life* 50,000 h	L80

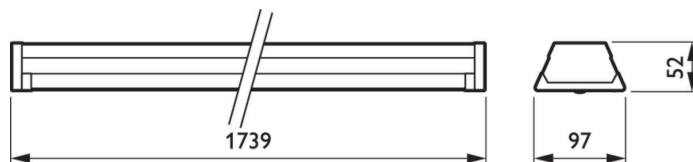
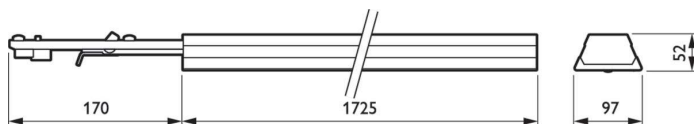
Application Conditions

Performance ambient temperature Tq	25 °C
Maximum dim level	1%
Suitable for random switching	No

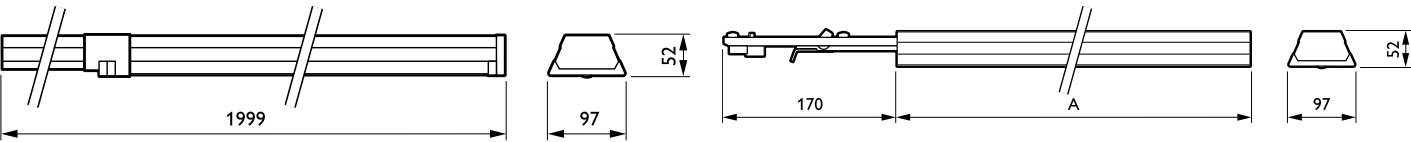
Product Data

Order product name	LL121X LED45S/840 1x PSD DA20 7 WH
Full product name	LL121X LED45S/840 1x PSD DA20 7 WH
Full EOC	871829188203900
Order code	88203900
Material no. (12 NC)	910925682946
SAP numerator – quantity per pack	1
EAN/UPC – Product/Case	8718291882039
Numerator – packs per outer box	1
EAN/UPC - Case	8718291882039

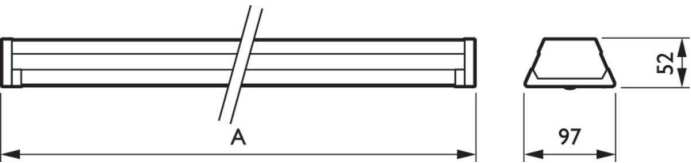
Dimensional drawing



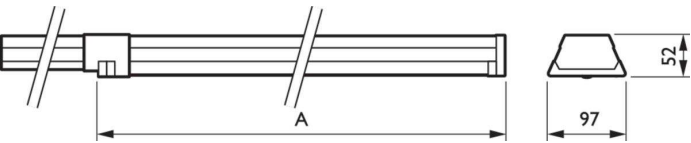
Dimensional drawing



Product	A
LL121X LED45S/840 1x PSD DA20 7 WH	1,725 mm



Product	A
LL121X LED45S/840 1x PSD DA20 7 WH	1,739 mm



Product	A
LL121X LED45S/840 1x PSD DA20 7 WH	1,999 mm

