



# CoreLine Trunking

## LL121X LED45S/840 PSU DA20 7 EL3 WH

CoreLine Trunking, LED Module, system flux 4500 lm, Power supply unit (On/Off), Double asymmetric optic 20°

Whether for a new facility or renovation of an existing space, customers want lighting solutions that provide quality of light and substantial energy and maintenance savings. The new CoreLine Trunking range of LED products can be used to replace general lighting. The process of selecting, installing and maintaining is so easy – it's a simple switch.

### Product data

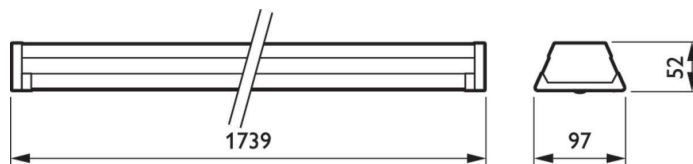
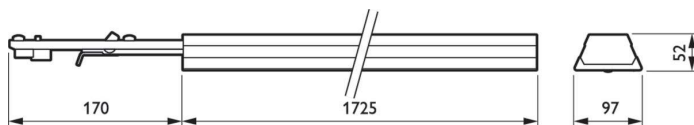
General Information		Flammability mark	
Lamp family code	LED45S [LED Module, system flux 4500 lm]	For mounting on normally flammable surfaces	
Light source replaceable	No	ENEC mark	
Number of gear units	1 unit	Glow-wire test	
Driver included	Yes	EU RoHS compliant	
Feed-through wiring	Feed-through wiring 7-phase	Light Technical	
Remarks	*-Per Lighting Europe guidance paper "Evaluating performance of LED based luminaires - January 2018": statistically there is no relevant difference in lumen maintenance between B50 and for example B10. Therefore, the median useful life (B50) value also represents the B10 value.	Luminous Flux	
Service tag	Yes	Correlated Color Temperature (Nom)	
Product family code	LL121X [CoreLine Trunking]	Luminous Efficacy (rated) (Nom)	
Lighting Technology	LED	Color rendering index (CRI)	
CE mark	Yes	Number of light sources	
Warranty period	3 years	Beam angle of light source	
		Light source color	
		Optic type	
		Optical cover type	
		Luminaire light beam spread	

## CoreLine Trunking

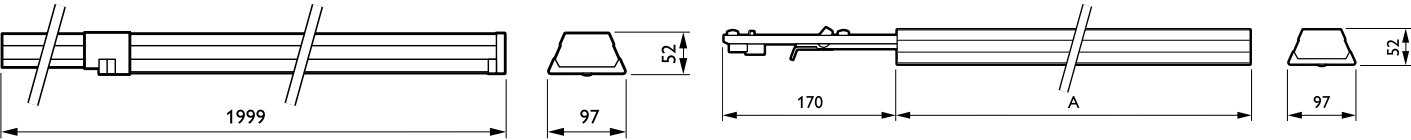
Unified glare rating CEN	Not applicable
<b>Operating and Electrical</b>	
Input Voltage	220 to 240 V
Line Frequency	50 to 60 Hz
Inrush current	19 A
Inrush time	0.28 ms
Power Consumption	34 W
Power Factor (Fraction)	0.95
Connection	Connection unit 7-pole
Cable	-
Number of products on MCB of 16 A type B	24
<b>Temperature</b>	
Ambient temperature range	-20 to +35 °C
<b>Controls and Dimming</b>	
Dimmable	No
Driver/power unit/transformer	Power supply unit (On/Off)
Constant light output	No
<b>Mechanical and Housing</b>	
Housing Material	Steel
Reflector material	-
Optic material	Polycarbonate
Optical cover material	Polycarbonate
Fixation material	Steel
Housing Color	White
Optical cover finish	Clear
Overall length	1,730 mm
Overall width	95 mm
Overall height	52 mm
Dimensions (Height x Width x Depth)	52 x 95 x 1730 mm

<b>Approval and Application</b>	
Ingress protection code	IP20 [Finger-protected]
Mech. impact protection code	IK02 [0.2 J standard]
Protection class IEC	Safety class I
<b>Initial Performance (IEC Compliant)</b>	
Luminous flux tolerance	+/-7%
Initial chromaticity	(0.38, 0.38) SDCM <3
Power consumption tolerance	+/-11%
<b>Over Time Performance (IEC Compliant)</b>	
Control gear failure rate at median useful life 50000 h	5 %
Lumen maintenance at median useful life* 50000 h	L80
<b>Application Conditions</b>	
Performance ambient temperature Tq	25 °C
Suitable for random switching	No
<b>Product Data</b>	
Order product name	LL121X LED45S/840 PSU DA20 7 EL3 WH
Full product name	LL121X LED45S/840 PSU DA20 7 EL3 WH
Full product code	871829188436100
Order code	88436100
Material Nr. (12NC)	910925682956
Numerator - Quantity Per Pack	1
EAN/UPC - Product/Case	8718291884361
Numerator - Packs per outer box	1
EAN/UPC - Case	8718291884361

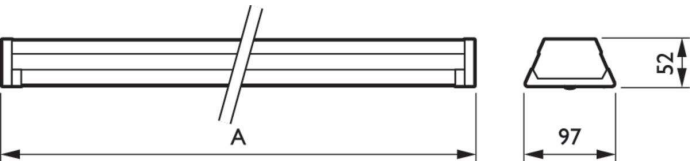
## Dimensional drawing



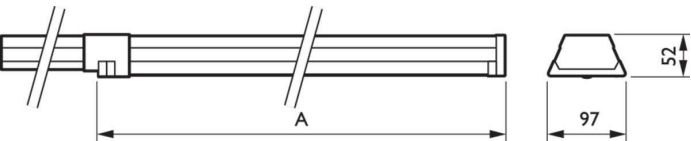
Dimensional drawing



Product	A
LL121X LED45S/840 PSU DA20 7 EL3 WH	1,725 mm



Product	A
LL121X LED45S/840 PSU DA20 7 EL3 WH	1,739 mm



Product	A
LL121X LED45S/840 PSU DA20 7 EL3 WH	1,999 mm

