



# CoreLine Trunking

## LL121X LED45S/840 PSU DA20 7 EL3 WH

CoreLine Trunking, LED Module, system flux 4500 lm, Power supply unit (On/Off), Double asymmetric optic 20°

Whether for a new facility or renovation of an existing space, customers want lighting solutions that provide quality of light and substantial energy and maintenance savings. The new CoreLine Trunking range of LED products can be used to replace general lighting. The process of selecting, installing and maintaining is so easy – it's a simple switch.

### Product data

General Information			
Lamp family code	LED45S [LED Module, system flux 4500 lm]	Flammability mark	For mounting on normally flammable surfaces
Light source replaceable	No	ENEC mark	ENEC mark
Number of gear units	Unit	Glow-wire test	Temperature 850 °C, duration 5 s
Driver included	Yes	EU RoHS compliant	Yes
Feed-through wiring	Feed-through wiring 7-phase	Light Technical	
Remarks	*- According to the Lighting Europe guidance paper 'Evaluating performance of LED based luminaires – January 2018': statistically there is no relevant difference in lumen maintenance between the B50 and, for example, the B10. Therefore, the median useful life (B50) value also represents the B10 value.	Luminous Flux	4,500 lm
Product family code	LL121X [CoreLine Trunking]	Correlated Colour Temperature	4000 K
Lighting Technology	LED	Luminous efficacy (rated) (nom.)	132 lm/W
CE mark	Yes	Colour rendering index (CRI)	≥80
Warranty period	3 years	Beam angle of light source	120 degree(s)
		Light source colour	840 neutral white
		Optic type	Double asymmetric optic 20°
		Optical cover type	-
		Luminaire light beam spread	86° x 80°
		Unified Glare Rating (CEN)	Not applicable

## CoreLine Trunking

### Operating and Electrical

Input Voltage	220 to 240 V
Line Frequency	50 to 60 Hz
Inrush current	19 A
Inrush time	0.28 ms
Power Consumption	34 W
Power Factor (Fraction)	0.95
Connection	Connection unit 7-pole
Cable	-
Number of products on MCB of 16 A type B	24

### Temperature

Ambient temperature range	-20 to +35 °C
---------------------------	---------------

### Controls and Dimming

Dimmable	No
Driver/power unit/transformer	Power supply unit (On/Off)
Constant light output	No

### Mechanical and Housing

Housing material	Steel
Reflector material	-
Optic material	Polycarbonate
Optical cover/lens material	Polycarbonate
Fixation material	Steel
Housing Colour	White
Optical cover/lens finish	Clear
Overall length	1,730 mm
Overall width	95 mm
Overall height	52 mm
Dimensions (height x width x depth)	52 x 95 x 1730 mm

### Approval and Application

Ingress protection code	IP20 [Finger-protected]
Mech. impact protection code	IK02 [0.2 J standard]
Protection class IEC	Safety class I

### Initial Performance (IEC Compliant)

Luminous flux tolerance	+/-7%
Initial chromaticity	(0.38, 0.38) SDCM <3
Power consumption tolerance	+/-11%

### Over Time Performance (IEC Compliant)

Control gear failure rate at median useful life 50,000 h	5 %
Lumen maintenance at median useful life* 50,000 h	L80

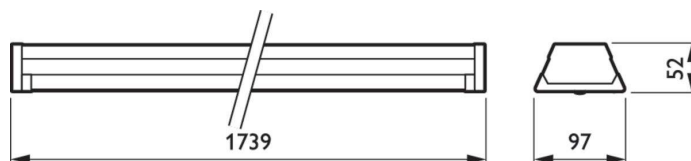
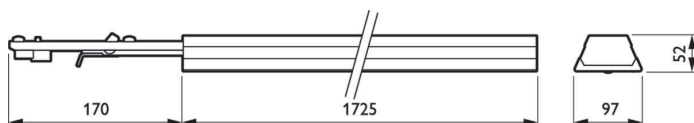
### Application Conditions

Performance ambient temperature Tq	25 °C
Suitable for random switching	No

### Product Data

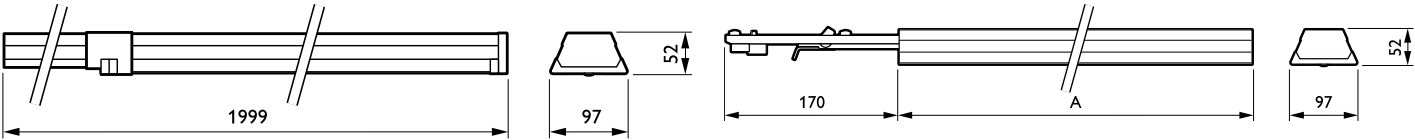
Order product name	LL121X LED45S/840 PSU DA20 7 EL3 WH
Full product name	LL121X LED45S/840 PSU DA20 7 EL3 WH
Full EOC	871829188436100
Order code	88436100
Material no. (12 NC)	910925682956
SAP numerator – quantity per pack	1
EAN/UPC – Product/Case	8718291884361
Numerator – packs per outer box	1
EAN/UPC – Case	8718291884361

## Dimensional drawing

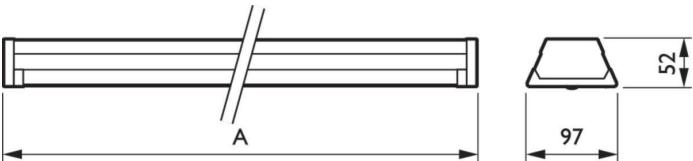


CoreLine Trunking

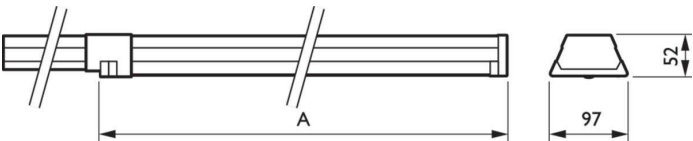
Dimensional drawing



Product	A
LL121X LED45S/840 PSU DA20 7 EL3 WH	1,725 mm



Product	A
LL121X LED45S/840 PSU DA20 7 EL3 WH	1,739 mm



Product	A
LL121X LED45S/840 PSU DA20 7 EL3 WH	1,999 mm

