



CoreLine Trunking

LL121X LED42S/840 1x PSD O 9 WH

CoreLine Trunking, LED module, system flux 4200 lm, 840 neutral white, Power supply unit with DALI interface, Opal, White

Whether for a new facility or renovation of an existing space, customers want lighting solutions that provide quality of light and substantial energy and maintenance savings. The new CoreLine Trunking range of LED products can be used to replace general lighting. The process of selecting, installing and maintaining is so easy – it's a simple switch.

Product data

General Information			
Lamp family code	LED42S [LED module, system flux 4200 lm]	Flammability mark	For mounting on normally flammable surfaces
Light source replaceable	No	CE mark	Yes
Number of gear units	1 unit	ENEC mark	ENEC mark
Driver included	Yes	Warranty period	3 years + 2 years upon registration
Feed-through wiring	Feed-through wiring 9-phase	EU RoHS compliant	Yes
Remarks	*-Per Lighting Europe guidance paper "Evaluating performance of LED based luminaires - January 2018": statistically there is no relevant difference in lumen maintenance between B50 and for example B10. Therefore, the median useful life (B50) value also represents the B10 value.	Light Technical	
Service tag	Yes	Luminous Flux	4,200 lm
Product family code	LL121X [CoreLine Trunking]	Correlated Color Temperature (Nom)	4000 K
Lighting Technology	LED	Luminous Efficacy (rated) (Nom)	131 lm/W
Glow-wire test	Temperature 850 °C, duration 5 s	Color rendering index (CRI)	≥80
		Number of light sources	3
		Beam angle of light source	120 degree(s)
		Light source color	840 neutral white
		Optic type	-
		Optical cover type	Opal

CoreLine Trunking

Luminaire light beam spread	117°
Unified glare rating CEN	Not applicable

Operating and Electrical

Input Voltage	220 to 240 V
Line Frequency	50 to 60 Hz
Inrush current	22 A
Inrush time	0.275 ms
Power Consumption	32 W
Power Factor (Fraction)	0.95
Connection	Connection unit 9-pole
Cable	-
Number of products on MCB of 16 A type B	24

Temperature

Ambient temperature range	-20 to +35 °C
---------------------------	---------------

Controls and Dimming

Dimmable	Yes
Driver/power unit/transformer	Power supply unit with DALI interface
Control interface	DALI
Constant light output	No

Mechanical and Housing

Housing Material	Steel
Reflector material	-
Optic material	Polycarbonate
Optical cover material	Polycarbonate
Fixation material	Steel
Housing Color	White
Optical cover finish	Opal
Overall length	1,730 mm
Overall width	95 mm
Overall height	52 mm

Dimensions (Height x Width x Depth)	52 x 95 x 1730 mm
-------------------------------------	-------------------

Approval and Application

Ingress protection code	IP20 [Finger-protected]
Mech. impact protection code	IK02 [0.2 J standard]
Protection class IEC	Safety class I

Initial Performance (IEC Compliant)

Luminous flux tolerance	+/-7%
Initial chromaticity	(0.38, 0.38) SDCM <3
Power consumption tolerance	+/-11%

Over Time Performance (IEC Compliant)

Control gear failure rate at median useful life 50000 h	5 %
Lumen maintenance at median useful life* 50000 h	L80

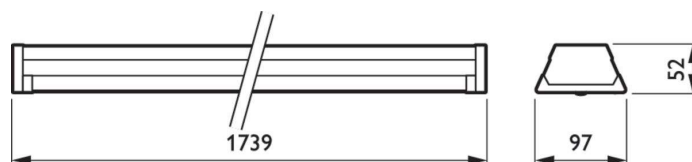
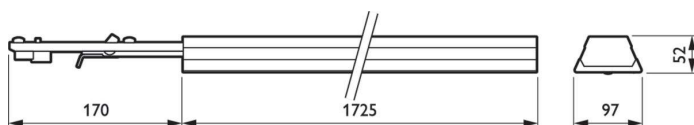
Application Conditions

Performance ambient temperature Tq	25 °C
Maximum dim level	1%
Suitable for random switching	No

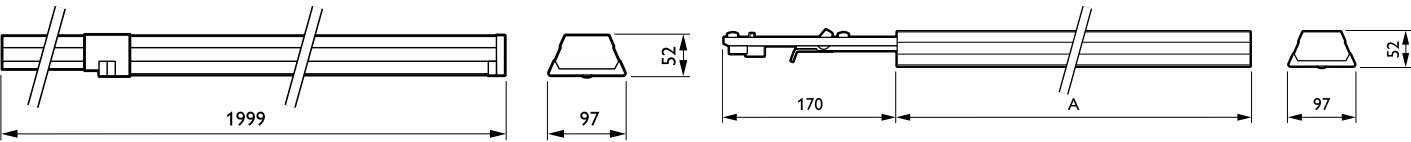
Product Data

Order product name	LL121X LED42S/840 1x PSD O 9 WH
Full product name	LL121X LED42S/840 1x PSD O 9 WH
Full product code	871829190735000
Order code	910925683009
Material Nr. (12NC)	910925683009
Numerator - Quantity Per Pack	1
EAN/UPC - Product/Case	8718291907350
Numerator - Packs per outer box	1
EAN/UPC - Case	8718291907350

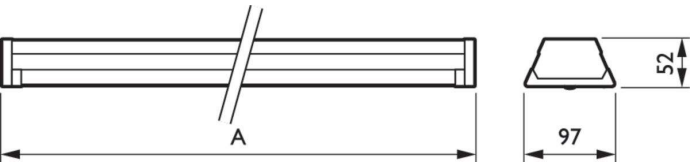
Dimensional drawing



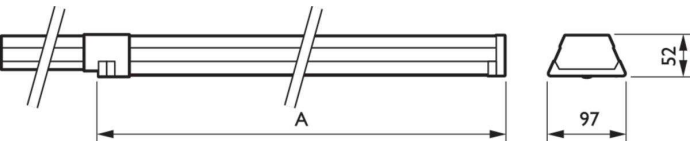
Dimensional drawing



Product	A
LL121X LED42S/840 1x PSD O 9 WH	1,725 mm



Product	A
LL121X LED42S/840 1x PSD O 9 WH	1,739 mm



Product	A
LL121X LED42S/840 1x PSD O 9 WH	1,999 mm

