



CoreLine Trunking

LL120X LED90S/840 2x PSD WB 9 VLC WH

CoreLine Trunking, LED module, system flux 9000 lm, Power supply unit with DALI interface, Wide beam

Whether for a new facility or renovation of an existing space, customers want lighting solutions that provide quality of light and substantial energy and maintenance savings. The new CoreLine Trunking range of LED products can be used to replace general lighting. The process of selecting, installing and maintaining is so easy – it's a simple switch.

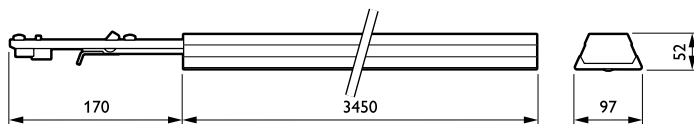
Product data

General Information		Flammability mark	
Lamp family code	LED90S [LED module, system flux 9000 lm]	For mounting on normally flammable surfaces	
Light source replaceable	No	CE mark	Yes
Number of gear units	2 units	ENEC mark	ENEC mark
Driver included	Yes	Warranty period	3 years + 2 years upon registration
Feed-through wiring	Feed-through wiring 9-phase	EU RoHS compliant	Yes
Remarks	*-Per Lighting Europe guidance paper "Evaluating performance of LED based luminaires - January 2018": statistically there is no relevant difference in lumen maintenance between B50 and for example B10. Therefore, the median useful life (B50) value also represents the B10 value.	Light Technical	
Service tag	Yes	Luminous Flux	9,000 lm
Product family code	LL120X [CoreLine Trunking]	Correlated Color Temperature (Nom)	4000 K
Lighting Technology	LED	Luminous Efficacy (rated) (Nom)	141 lm/W
Glow-wire test	Temperature 650 °C, duration 5 s	Color rendering index (CRI)	≥80
		Number of light sources	6
		Beam angle of light source	120 degree(s)
		Light source color	840 neutral white
		Optic type	Wide beam
		Optical cover type	-
		Luminaire light beam spread	88° x 94°

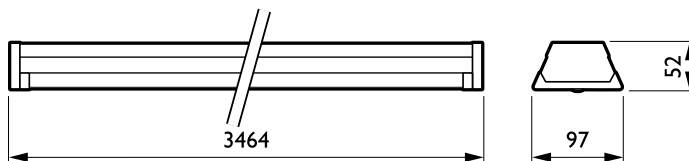
CoreLine Trunking

Unified glare rating CEN	Not applicable
Operating and Electrical	
Input Voltage	220 to 240 V
Line Frequency	50 to 60 Hz
Inrush current	44 A
Inrush time	0.275 ms
Power Consumption	64 W
Power Factor (Fraction)	0.95
Connection	Connection unit 9-pole
Cable	-
Number of products on MCB of 16 A type B	12
Temperature	
Ambient temperature range	-20 to +35 °C
Controls and Dimming	
Dimmable	Yes
Driver/power unit/transformer	Power supply unit with DALI interface
Control interface	DALI
Constant light output	No
Mechanical and Housing	
Housing Material	Steel
Reflector material	-
Optic material	Acrylate
Optical cover material	Acrylate
Fixation material	Steel
Housing Color	White
Optical cover finish	Clear
Overall length	3,450 mm
Overall width	95 mm
Overall height	52 mm
Dimensions (Height x Width x Depth)	52 x 95 x 3450 mm

Dimensional drawing



Approval and Application	
Ingress protection code	IP20 [Finger-protected]
Mech. impact protection code	IK02 [0.2 J standard]
Protection class IEC	Safety class I
Initial Performance (IEC Compliant)	
Luminous flux tolerance	+/-7%
Initial chromaticity	(0.38, 0.38) SDCM <3
Power consumption tolerance	+/-11%
Over Time Performance (IEC Compliant)	
Control gear failure rate at median useful life 50000 h	5 %
Lumen maintenance at median useful life* 50000 h	L80
Application Conditions	
Performance ambient temperature Tq	25 °C
Maximum dim level	1%
Suitable for random switching	No
Product Data	
Order product name	LL120X LED90S/840 2x PSD WB 9 VLC WH
Full product name	LL120X LED90S/840 2x PSD WB 9 VLC WH
Full product code	871829190746600
Order code	910925683021
Material Nr. (12NC)	910925683021
Numerator - Quantity Per Pack	1
EAN/UPC - Product/Case	8718291907466
Numerator - Packs per outer box	1
EAN/UPC - Case	8718291907466



CoreLine Trunking

Dimensional drawing

