



# CoreLine Trunking

## LL120X LED84S/840 1x PSD O 7 WH

CoreLine Trunking, LED Module, system flux 8400 lm, Power supply unit with DALI interface, Opal

Whether for a new facility or renovation of an existing space, customers want lighting solutions that provide quality of light and substantial energy and maintenance savings. The new CoreLine Trunking range of LED products can be used to replace general lighting. The process of selecting, installing and maintaining is so easy – it's a simple switch.

### Product data

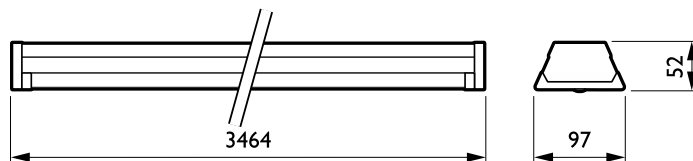
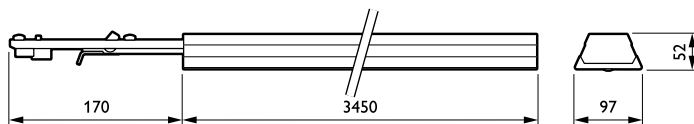
General Information		Flammability mark	
Lamp family code	LED84S [LED Module, system flux 8400 lm]	For mounting on normally flammable surfaces	
Light source replaceable	No	CE mark	Yes
Number of gear units	1 unit	ENEC mark	ENEC mark
Driver included	Yes	Warranty period	3 years + 2 years upon registration
Feed-through wiring	Feed-through wiring 7-phase	EU RoHS compliant	Yes
Remarks	*-Per Lighting Europe guidance paper "Evaluating performance of LED based luminaires - January 2018": statistically there is no relevant difference in lumen maintenance between B50 and for example B10. Therefore, the median useful life (B50) value also represents the B10 value.	Light Technical	
Service tag		Luminous Flux	8,400 lm
Product family code	LL120X [CoreLine Trunking]	Correlated Color Temperature (Nom)	4000 K
Lighting Technology	LED	Luminous Efficacy (rated) (Nom)	131 lm/W
Glow-wire test	Temperature 850 °C, duration 5 s	Color rendering index (CRI)	≥80
		Number of light sources	6
		Beam angle of light source	120 degree(s)
		Light source color	840 neutral white
		Optic type	-
		Optical cover type	Opal
		Luminaire light beam spread	117°

## CoreLine Trunking

Unified glare rating CEN	Not applicable
<b>Operating and Electrical</b>	
Input Voltage	220 to 240 V
Line Frequency	50 to 60 Hz
Inrush current	4.8 A
Inrush time	2.3 ms
Power Consumption	64 W
Power Factor (Fraction)	0.95
Connection	Connection unit 7-pole
Cable	-
Number of products on MCB of 16 A type B	12
<b>Temperature</b>	
Ambient temperature range	-20 to +35 °C
<b>Controls and Dimming</b>	
Dimmable	Yes
Driver/power unit/transformer	Power supply unit with DALI interface
Control interface	DALI
Constant light output	No
<b>Mechanical and Housing</b>	
Housing Material	Steel
Reflector material	-
Optic material	Polycarbonate
Optical cover material	Polycarbonate
Fixation material	Steel
Housing Color	White
Optical cover finish	Opal
Overall length	3,450 mm
Overall width	95 mm
Overall height	52 mm
Dimensions (Height x Width x Depth)	52 x 95 x 3450 mm

<b>Approval and Application</b>	
Ingress protection code	IP20 [Finger-protected]
Mech. impact protection code	IK02 [0.2 J standard]
Protection class IEC	Safety class I
<b>Initial Performance (IEC Compliant)</b>	
Luminous flux tolerance	+/-7%
Initial chromaticity	(0.38, 0.38) SDCM <3
Power consumption tolerance	+/-11%
<b>Over Time Performance (IEC Compliant)</b>	
Control gear failure rate at median useful life 50000 h	5 %
Lumen maintenance at median useful life* 50000 h	L80
<b>Application Conditions</b>	
Performance ambient temperature Tq	25 °C
Maximum dim level	1%
Suitable for random switching	No
<b>Product Data</b>	
Order product name	LL120X LED84S/840 1x PSD O 7 WH
Full product name	LL120X LED84S/840 1x PSD O 7 WH
Full product code	871869632339700
Order code	910925863105
Material Nr. (12NC)	910925863105
Numerator - Quantity Per Pack	1
EAN/UPC - Product/Case	8718696323397
Numerator - Packs per outer box	1
EAN/UPC - Case	8718696323397

## Dimensional drawing



## CoreLine Trunking

### Dimensional drawing

