



CoreLine Trunking

LL120X LED160S/840 PSU NB SMB WH KIT

CoreLine Trunking, 6, LED module, system flux 16000 lm, Power supply unit (On/Off), Narrow beam, White

Whether for a new facility or renovation of an existing space, customers want lighting solutions that provide quality of light and substantial energy and maintenance savings. The new CoreLine Trunking range of LED products can be used to replace general lighting. The process of selecting, installing and maintaining is so easy – it's a simple switch.

Product data

General Information		Flammability mark	
Lamp family code	LED160S [LED module, system flux 16000 lm]		For mounting on normally flammable surfaces
Light source replaceable	No	ENEC mark	ENEC mark
Number of gear units	2 units	Glow-wire test	Temperature 650 °C, duration 5 s
Driver included	Yes	EU RoHS compliant	Yes
Remarks	*-Per Lighting Europe guidance paper "Evaluating performance of LED based luminaires - January 2018": statistically there is no relevant difference in lumen maintenance between B50 and for example B10. Therefore, the median useful life (B50) value also represents the B10 value.	Light Technical	
Service tag	Yes	Luminous Flux	16,000 lm
Product family code	LL120X [CoreLine Trunking]	Correlated Color Temperature (Nom)	4000 K
Lighting Technology	LED	Luminous Efficacy (rated) (Nom)	148 lm/W
CE mark	Yes	Color rendering index (CRI)	≥80
Warranty period	3 years + 2 years upon registration	Number of light sources	6
		Beam angle of light source	120 degree(s)
		Light source color	840 neutral white
		Optic type	Narrow beam
		Optical cover type	-
		Luminaire light beam spread	48° x 66°

CoreLine Trunking

Unified glare rating CEN	Not applicable
--------------------------	----------------

Operating and Electrical

Input Voltage	220 to 240 V
Line Frequency	50 to 60 Hz
Initial CLO power consumption	- W
Average CLO power consumption	- W
Inrush current	19 A
Inrush time	0.28 ms
Power Consumption	108 W
Power Factor (Fraction)	0.97
Connection	Connection unit 5-pole
Cable	-
Number of products on MCB of 16 A type B	24

Temperature

Ambient temperature range	-20 to +35 °C
---------------------------	---------------

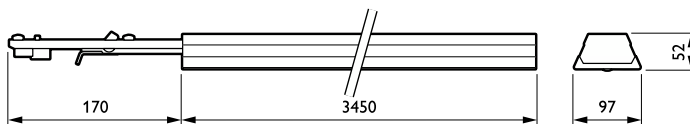
Controls and Dimming

Dimmable	No
Driver/power unit/transformer	Power supply unit (On/Off)
Control interface	-
Constant light output	No

Mechanical and Housing

Housing Material	Steel
Reflector material	-
Optic material	Acrylate
Optical cover material	Acrylate
Fixation material	Steel
Housing Color	White
Optical cover finish	Clear
Overall length	3,450 mm
Overall width	95 mm
Overall height	52 mm

Dimensional drawing



Dimensions (Height x Width x Depth)	52 x 95 x 3450 mm
-------------------------------------	-------------------

Approval and Application

Ingress protection code	IP20 [Finger-protected]
Mech. impact protection code	IK02 [0.2 J standard]
Protection class IEC	Safety class I

Initial Performance (IEC Compliant)

Luminous flux tolerance	+/-2%
Initial chromaticity	(0.38, 0.38) SDCM <3
Power consumption tolerance	+/-10%

Over Time Performance (IEC Compliant)

Control gear failure rate at median useful life 50000 h	5 %
Lumen maintenance at median useful life* 50000 h	L80

Application Conditions

Performance ambient temperature Tq	25 °C
Maximum dim level	Not applicable
Suitable for random switching	No

Product Data

Order product name	LL120X LED160S/840 PSU NB SMB WH KIT
Full product name	LL120X LED160S/840 PSU NB SMB WH KIT
Full product code	871869638082600
Order code	910925863961
Material Nr. (12NC)	910925863961
Numerator - Quantity Per Pack	1
EAN/UPC - Product/Case	8718696380826
Numerator - Packs per outer box	1
EAN/UPC - Case	8718696380826

