



CoreLine Trunking

LL121X LED80S/840 1x PSD NB 7 WH

CoreLine Trunking, 3, LED Module, system flux 8000 lm, Power supply unit with DALI interface, Narrow beam, Feed-through wiring 7-phase, White

Whether for a new facility or renovation of an existing space, customers want lighting solutions that provide quality of light and substantial energy and maintenance savings. The new CoreLine Trunking range of LED products can be used to replace general lighting. The process of selecting, installing and maintaining is so easy – it's a simple switch.

Product data

General Information		Warranty period	
Lamp family code	LED80S [LED Module, system flux 8000 lm]	Warranty period	3 years + 2 years upon registration
Light source replaceable	No	Flammability mark	For mounting on normally flammable surfaces
Number of gear units	Unit	ENEC mark	ENEC mark
Driver included	Yes	Glow-wire test	Temperature 650 °C, duration 5 s
Feed-through wiring	Feed-through wiring 7-phase	EU RoHS compliant	Yes
Remarks	*- According to the Lighting Europe guidance paper 'Evaluating performance of LED based luminaires – January 2018': statistically there is no relevant difference in lumen maintenance between the B50 and, for example, the B10. Therefore, the median useful life (B50) value also represents the B10 value.	Light Technical	
Product family code	LL121X [CoreLine Trunking]	Luminous Flux	8,000 lm
Lighting Technology	LED	Correlated Colour Temperature	4000 K
CE mark	Yes	Luminous efficacy (rated) (nom.)	148 lm/W
		Colour rendering index (CRI)	≥80
		Number of light sources	3
		Beam angle of light source	120 degree(s)
		Light source colour	840 neutral white
		Optic type	Narrow beam
		Optical cover type	-

CoreLine Trunking

Luminaire light beam spread	48° x 66°
Unified Glare Rating (CEN)	Not applicable

Operating and Electrical

Input Voltage	220 to 240 V
Line Frequency	50 to 60 Hz
Initial CLO power consumption	- W
Average CLO power consumption	- W
Inrush current	22 A
Inrush time	0.275 ms
Power Consumption	54 W
Power Factor (Fraction)	0.97
Connection	Connection unit 7-pole
Cable	-
Number of products on MCB of 16 A type B	24

Temperature

Ambient temperature range	-20 to +35 °C
---------------------------	---------------

Controls and Dimming

Dimmable	Yes
Driver/power unit/transformer	Power supply unit with DALI interface
Control interface	DALI
Constant light output	No

Mechanical and Housing

Housing material	Steel
Reflector material	-
Optic material	Acrylate
Optical cover/lens material	Acrylate
Fixation material	Steel
Housing Colour	White
Optical cover/lens finish	Clear
Overall length	1,730 mm
Overall width	95 mm

Overall height	52 mm
Dimensions (height x width x depth)	52 x 95 x 1730 mm

Approval and Application

Ingress protection code	IP20 [Finger-protected]
Mech. impact protection code	IK02 [0.2 J standard]
Protection class IEC	Safety class I

Initial Performance (IEC Compliant)

Luminous flux tolerance	+/-1%
Initial chromaticity	(0.38, 0.38) SDCM <3
Power consumption tolerance	+/-10%

Over Time Performance (IEC Compliant)

Control gear failure rate at median useful life 50,000 h	5 %
Lumen maintenance at median useful life* 50,000 h	L80

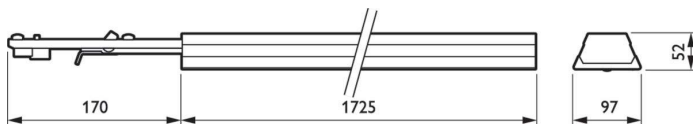
Application Conditions

Performance ambient temperature Tq	25 °C
Maximum dim level	1%
Suitable for random switching	No

Product Data

Order product name	LL121X LED80S/840 1x PSD NB 7 WH
Full product name	LL121X LED80S/840 1x PSD NB 7 WH
Full EOC	871869638120500
Order code	38120500
Material no. (12 NC)	910925863999
SAP numerator – quantity per pack	1
EAN/UPC – Product/Case	8718696381205
Numerator – packs per outer box	1
EAN/UPC - Case	8718696381205

Dimensional drawing



CoreLine Trunking

