



CoreLine Trunking

LL121X LED80S/840 1x PSU A 5 WH

CoreLine Trunking, 3, LED Module, system flux 8000 lm, Power supply unit (On/Off), Asymmetrical mirror, Feed-through wiring 5-phase, White

Whether for a new facility or renovation of an existing space, customers want lighting solutions that provide quality of light and substantial energy and maintenance savings. The new CoreLine Trunking range of LED products can be used to replace general lighting. The process of selecting, installing and maintaining is so easy – it's a simple switch.

Product data

| General Information | | Warranty period | |
|--------------------------|--|------------------------------------|---|
| Lamp family code | LED80S [LED Module, system flux 8000 lm] | Warranty period | 3 years + 2 years upon registration |
| Light source replaceable | No | Flammability mark | For mounting on normally flammable surfaces |
| Number of gear units | 1 unit | ENEC mark | ENEC mark |
| Driver included | Yes | Glow-wire test | Temperature 650 °C, duration 5 s |
| Feed-through wiring | Feed-through wiring 5-phase | EU RoHS compliant | Yes |
| Remarks | *-Per Lighting Europe guidance paper "Evaluating performance of LED based luminaires - January 2018": statistically there is no relevant difference in lumen maintenance between B50 and for example B10. Therefore, the median useful life (B50) value also represents the B10 value. | Light Technical | |
| Service tag | Yes | Luminous Flux | 8,000 lm |
| Product family code | LL121X [CoreLine Trunking] | Correlated Color Temperature (Nom) | 4000 K |
| Lighting Technology | LED | Luminous Efficacy (rated) (Nom) | 148 lm/W |
| CE mark | Yes | Color rendering index (CRI) | ≥80 |
| | | Number of light sources | 3 |
| | | Beam angle of light source | 120 degree(s) |
| | | Light source color | 840 neutral white |
| | | Optic type | Asymmetrical mirror |
| | | Optical cover type | - |

CoreLine Trunking

| | |
|-----------------------------|----------------|
| Luminaire light beam spread | 60° x 120° |
| Unified glare rating CEN | Not applicable |

Operating and Electrical

| | |
|--|------------------------|
| Input Voltage | 220 to 240 V |
| Line Frequency | 50 to 60 Hz |
| Initial CLO power consumption | - W |
| Average CLO power consumption | - W |
| Inrush current | 19 A |
| Inrush time | 0.28 ms |
| Power Consumption | 54 W |
| Power Factor (Fraction) | 0.97 |
| Connection | Connection unit 5-pole |
| Cable | - |
| Number of products on MCB of 16 A type B | 24 |

Temperature

| | |
|---------------------------|---------------|
| Ambient temperature range | -20 to +35 °C |
|---------------------------|---------------|

Controls and Dimming

| | |
|-------------------------------|----------------------------|
| Dimmable | No |
| Driver/power unit/transformer | Power supply unit (On/Off) |
| Control interface | - |
| Constant light output | No |

Mechanical and Housing

| | |
|------------------------|----------|
| Housing Material | Steel |
| Reflector material | - |
| Optic material | Acrylate |
| Optical cover material | Acrylate |
| Fixation material | Steel |
| Housing Color | White |
| Optical cover finish | Frosted |
| Overall length | 1,730 mm |
| Overall width | 95 mm |

| | |
|-------------------------------------|-------------------|
| Overall height | 52 mm |
| Dimensions (Height x Width x Depth) | 52 x 95 x 1730 mm |

Approval and Application

| | |
|------------------------------|-------------------------|
| Ingress protection code | IP20 [Finger-protected] |
| Mech. impact protection code | IK02 [0.2 J standard] |
| Protection class IEC | Safety class I |

Initial Performance (IEC Compliant)

| | |
|-----------------------------|----------------------|
| Luminous flux tolerance | +/-1% |
| Initial chromaticity | (0.38, 0.38) SDCM <3 |
| Power consumption tolerance | +/-10% |

Over Time Performance (IEC Compliant)

| | |
|---|-----|
| Control gear failure rate at median useful life 50000 h | 5% |
| Lumen maintenance at median useful life* 50000 h | L80 |

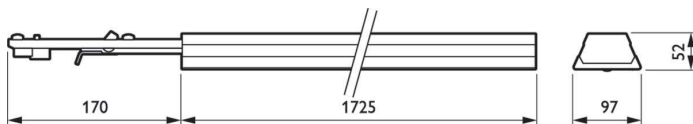
Application Conditions

| | |
|------------------------------------|----------------|
| Performance ambient temperature Tq | 25 °C |
| Maximum dim level | Not applicable |
| Suitable for random switching | No |

Product Data

| | |
|---------------------------------|---------------------------------|
| Order product name | LL121X LED80S/840 1x PSU A 5 WH |
| Full product name | LL121X LED80S/840 1x PSU A 5 WH |
| Full product code | 871869638139700 |
| Order code | 910925864019 |
| Material Nr. (12NC) | 910925864019 |
| Numerator - Quantity Per Pack | 1 |
| EAN/UPC - Product/Case | 8718696381397 |
| Numerator - Packs per outer box | 1 |
| EAN/UPC - Case | 8718696381397 |

Dimensional drawing



CoreLine Trunking

