



# SmartBright Highbay

## BY218P LED90/CW PSU

LED module, system flux 9000 lm, Cool white, Power supply unit (On/Off)

SmartBright Essential Highbay is a high efficient and reliable LED luminaire, designed for industrial application without humid and dust protection requirements. It enables point to point replacement of HID conventional luminaires, and delivers significant energy savings of up to 64% as compared to HID lamp system. With the innovation of micro prism structure optical plate, it provides an excellent glare control and smooth uniform lighting surface, which effectively improve the comfort of your environment.

### Product data

General Information			
Lamp family code	LED90S [LED module, system flux 9000 lm]	Luminous Efficacy (rated) (Nom)	90 lm/W
Light source replaceable	No	Color rendering index (CRI)	>75
Number of gear units	1 unit	Beam angle of light source	120 degree(s)
Gear	-	Light source color	Cool white
Driver included	Yes	Optic type	Wide beam
Glow-wire test	Temperature 650 °C, duration 30 s	Optical cover type	Micro-lens optic in polycarbonate cover
Flammability mark	-	Luminaire light beam spread	105°
CE mark	CE mark	Operating and Electrical	
ENEC mark	-	Input Voltage	220-240 V
Warranty period	3 years	Line Frequency	50 to 60 Hz
EU RoHS compliant	No	Inrush current	35 A
Light Technical		Inrush time	0.37 ms
Luminous Flux	9,000 lm	Power Consumption	100 W
Correlated Color Temperature (Nom)	6500 K	Power Factor (Fraction)	0.9
		Connection	Flying leads/wires

## SmartBright Highbay

Cable	Cable 0.3 m without plug
Number of products on MCB of 16 A type B 10	
Temperature	
Ambient temperature range	-20 to +40 °C
Controls and Dimming	
Dimmable	No
Driver/power unit/transformer	Power supply unit (On/Off)
Constant light output	No
Mechanical and Housing	
Housing Material	Steel
Reflector material	-
Optic material	Polycarbonate
Optical cover material	Polycarbonate
Fixation material	-
Housing Color	Gray and gray
Optical cover finish	Frosted
Overall height	139 mm
Overall diameter	277 mm
Approval and Application	
Ingress protection code	IP20 [Finger-protected]
Mech. impact protection code	IK03 [0.3 J]
Protection class IEC	Safety class I

Initial Performance (IEC Compliant)	
Luminous flux tolerance	+/-7.5%
Initial chromaticity	(0.31, 0.32) SDCM <5
Power consumption tolerance	+/-10%

### Over Time Performance (IEC Compliant)

<b>Driver failure rate at 5000 h</b>	1 %
<b>Median useful life L70B50</b>	25,000 hour(s)
<b>Median useful life L80B50</b>	20,000 hour(s)
<b>Median useful life L90B50</b>	15,000 hour(s)

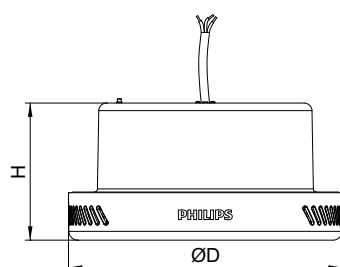
## Application Conditions

Suitable for random switching	No
-------------------------------	----

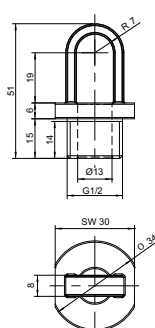
## Product Data

Order product name	BY218P LED90/CW PSU
Full product name	BY218P LED90/CW PSU
Full product code	697013372998400
Order code	911401560421
Material Nr. (12NC)	911401560421
Numerator - Quantity Per Pack	1
EAN/UPC - Product/Case	6970133729984
Numerator - Packs per outer box	1
EAN/UPC - Case	6970133729984

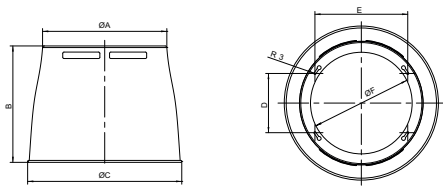
## Dimensional drawing



	D	H
BY218P LED180	369	147
BY218P LED90	277	139
BY218P LED50	231	124
BY258P LED180	369	147
BY258P LED90	277	139
BY258P LED50	231	124



Dimensional drawing



Type	A	B	C	D	E	F
BY218Z RL-L	385	361	478	183.5	287.6	315
BY218Z RL-M	292	283	372	141.5	210.4	230
BY218Z RL-S	246	233	317	114.9	175.7	193

