



SmartBright Highbay

BY218P LED50/NW PSU

LED Module, system flux 5200 lm, Neutral white, Power supply unit (On/Off)

SmartBright Essential Highbay is a high efficient and reliable LED luminaire, designed for industrial application without humid and dust protection requirements. It enables point to point replacement of HID conventional luminaires, and delivers significant energy savings of up to 64% as compared to HID lamp system. With the innovation of micro prism structure optical plate, it provides an excellent glare control and smooth uniform lighting surface, which effectively improve the comfort of your environment.

Product data

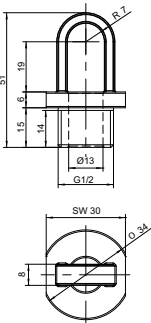
| General Information | | | |
|------------------------------------|--|---------------------------------|---|
| Lamp family code | LED52S [LED Module, system flux 5200 lm] | Luminous Efficacy (rated) (Nom) | 87 lm/W |
| Light source replaceable | No | Color rendering index (CRI) | >75 |
| Number of gear units | 1 unit | Beam angle of light source | 120 degree(s) |
| Gear | - | Light source color | Neutral white |
| Driver included | Yes | Optic type | Wide beam |
| Glow-wire test | Temperature 650 °C, duration 30 s | Optical cover type | Micro-lens optic in polycarbonate cover |
| Flammability mark | - | Luminaire light beam spread | 105° |
| CE mark | CE mark | Operating and Electrical | |
| ENEC mark | - | Input Voltage | 220-240 V |
| Warranty period | 3 years | Line Frequency | 50 to 60 Hz |
| EU RoHS compliant | No | Inrush current | 26 A |
| Light Technical | | Inrush time | 0.25 ms |
| Luminous Flux | 5,200 lm | Power Consumption | 60 W |
| Correlated Color Temperature (Nom) | 4000 K | Power Factor (Fraction) | 0.9 |
| | | Connection | Flying leads/wires |

SmartBright Highway

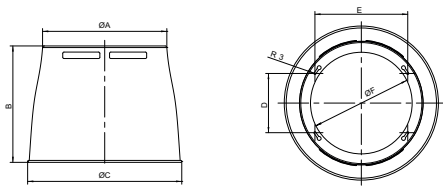
| | |
|--|----------------------------|
| Cable | Cable 0.3 m without plug |
| Number of products on MCB of 16 A type B | 20 |
| Temperature | |
| Ambient temperature range | -20 to +40 °C |
| Controls and Dimming | |
| Dimmable | No |
| Driver/power unit/transformer | Power supply unit (On/Off) |
| Constant light output | No |
| Mechanical and Housing | |
| Housing Material | Steel |
| Reflector material | - |
| Optic material | Polycarbonate |
| Optical cover material | Polycarbonate |
| Fixation material | - |
| Housing Color | Gray and gray |
| Optical cover finish | Frosted |
| Overall height | 124 mm |
| Overall diameter | 231 mm |
| Approval and Application | |
| Ingress protection code | IP20 [Finger-protected] |
| Mech. impact protection code | IK03 [0.3 J] |
| Protection class IEC | Safety class I |

| | |
|---------------------------------------|----------------------|
| Initial Performance (IEC Compliant) | |
| Luminous flux tolerance | +/-7.5% |
| Initial chromaticity | (0.38, 0.38) SDCM <5 |
| Power consumption tolerance | +/-10% |
| Over Time Performance (IEC Compliant) | |
| Driver failure rate at 5000 h | 1 % |
| Median useful life L70B50 | 25,000 hour(s) |
| Median useful life L80B50 | 20,000 hour(s) |
| Median useful life L90B50 | 15,000 hour(s) |
| Application Conditions | |
| Suitable for random switching | No |
| Product Data | |
| Order product name | BY218P LED50/NW PSU |
| Full product name | BY218P LED50/NW PSU |
| Full product code | 697013372995300 |
| Order code | 911401560721 |
| Material Nr. (12NC) | 911401560721 |
| Numerator - Quantity Per Pack | 1 |
| EAN/UPC - Product/Case | 6970133729953 |
| Numerator - Packs per outer box | 1 |
| EAN/UPC - Case | 6970133729953 |

Dimensional drawing



Dimensional drawing



| Type | A | B | C | D | E | F |
|-------------|-----|-----|-----|-------|-------|-----|
| BY218Z RL-L | 385 | 361 | 478 | 183.5 | 287.6 | 315 |
| BY218Z RL-M | 292 | 283 | 372 | 141.5 | 210.4 | 230 |
| BY218Z RL-S | 246 | 233 | 317 | 114.9 | 175.7 | 193 |

