



# Pentura Mini LED

## BN130C LED10S/830 PSU L1185

LED Module, system flux 1000 lm, 830 warm white, Power supply unit (On/Off)

Pentura Mini LED is an extremely slim batten that offers the energy-saving benefits of LED technology, coupled with excellent lighting performance – bright, uniform light with good color rendering. Pentura Mini LED is very easy to install, even where space is limited, e.g. under shelves in shops, and over worktops and workstations in the home and home office. Thanks to its integrated driver and through-wiring, installation time is reduced to a minimum. Power cable, mounting clips and connection accessories are also supplied. Thin end-caps minimize black spots between the products, enabling consumers to create a continuous light-line.

### Product data

General Information	
Lamp family code	LED10S [LED Module, system flux 1000 lm]
Light source replaceable	No
Driver included	Yes
Remarks	*- According to the Lighting Europe guidance paper 'Evaluating performance of LED based luminaires – January 2018': statistically there is no relevant difference in lumen maintenance between the B50 and, for example, the B10. Therefore, the median useful life (B50) value also represents the B10 value.
CE mark	CE mark
Glow-wire test	Temperature 850 °C, duration 5 s
Light Technical	
Luminous Flux	1,000 lm

Correlated Colour Temperature	3000 K
Luminous efficacy (rated) (nom.)	71 lm/W
Colour rendering index (CRI)	>75
Light source colour	830 warm white
Operating and Electrical	
Input Voltage	220 to 240 V
Line Frequency	50 to 60 Hz
Power Consumption	14 W
Temperature	
Ambient temperature range	0 to +35 °C
Controls and Dimming	
Dimmable	No

Pentura Mini LED

Driver/power unit/transformer	Power supply unit (On/Off)
-------------------------------	----------------------------

Mechanical and Housing

Housing material	Polycarbonate
Optical cover/lens material	Glass
Housing Colour	White

Approval and Application

Ingress protection code	IP20 [Finger-protected]
Mech. impact protection code	IK02 [0.2 J standard]
Protection class IEC	Safety class II

Initial Performance (IEC Compliant)

Initial chromaticity	(0.42, 0.40) SDCM <5
----------------------	----------------------

Application Conditions

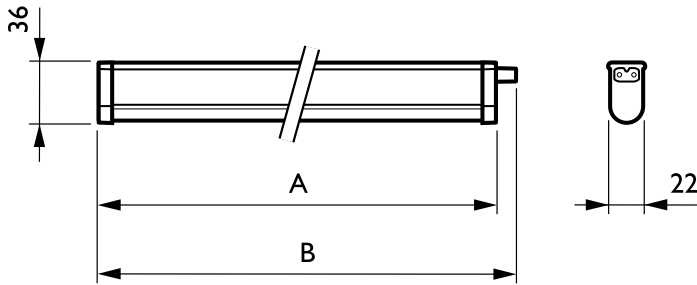
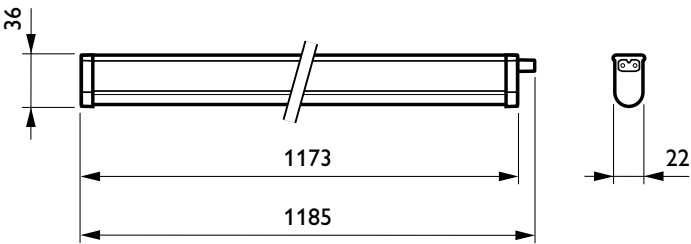
Performance ambient temperature Tq	25 °C
------------------------------------	-------

Suitable for random switching	No
-------------------------------	----

Product Data

Order product name	BN130C LED10S/830 PSU L1185
Full product name	BN130C LED10S/830 PSU L1185
Full EOC	871016329648799
Order code	29648799
Material no. (12 NC)	911401704762
SAP numerator – quantity per pack	1
EAN/UPC – Product/Case	8710163296487
Numerator – packs per outer box	24
EAN/UPC - Case	8710163296562

Dimensional drawing



Product	A
BN130C LED10S/830 PSU L1185	1,185 mm

