



# Pentura Mini LED

## BN130C LED8S/840 PSU L885

LED Module, system flux 800 lm, 840 neutral white, Power supply unit (On/Off)

Pentura Mini LED is an extremely slim batten that offers the energy-saving benefits of LED technology, coupled with excellent lighting performance – bright, uniform light with good color rendering. Pentura Mini LED is very easy to install, even where space is limited, e.g. under shelves in shops, and over worktops and workstations in the home and home office. Thanks to its integrated driver and through-wiring, installation time is reduced to a minimum. Power cable, mounting clips and connection accessories are also supplied. Thin end-caps minimize black spots between the products, enabling consumers to create a continuous light-line.

### Product data

General Information	
Lamp family code	LED8S [LED Module, system flux 800 lm]
Light source replaceable	No
Driver included	Yes
Remarks	*- According to the Lighting Europe guidance paper 'Evaluating performance of LED based luminaires – January 2018': statistically there is no relevant difference in lumen maintenance between the B50 and, for example, the B10. Therefore, the median useful life (B50) value also represents the B10 value.
CE mark	CE mark
Glow-wire test	Temperature 850 °C, duration 5 s
Light Technical	
Luminous Flux	800 lm

Correlated Colour Temperature	4000 K
Luminous efficacy (rated) (nom.)	74 lm/W
Colour rendering index (CRI)	>75
Light source colour	840 neutral white
Operating and Electrical	
Input Voltage	220 to 240 V
Line Frequency	50 to 60 Hz
Power Consumption	10.8 W
Temperature	
Ambient temperature range	0 to +35 °C
Controls and Dimming	
Dimmable	No

Pentura Mini LED

Driver/power unit/transformer	Power supply unit (On/Off)
-------------------------------	----------------------------

Mechanical and Housing

Housing material	Polycarbonate
Optical cover/lens material	Glass
Housing Colour	White

Approval and Application

Ingress protection code	IP20 [Finger-protected]
Mech. impact protection code	IK02 [0.2 J standard]
Protection class IEC	Safety class II

Initial Performance (IEC Compliant)

Initial chromaticity	(0.37, 0.38) SDCM <5
----------------------	----------------------

Application Conditions

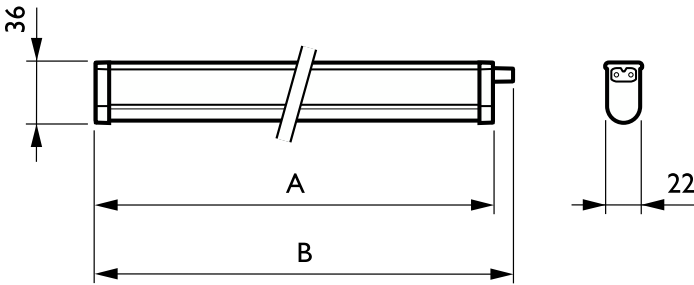
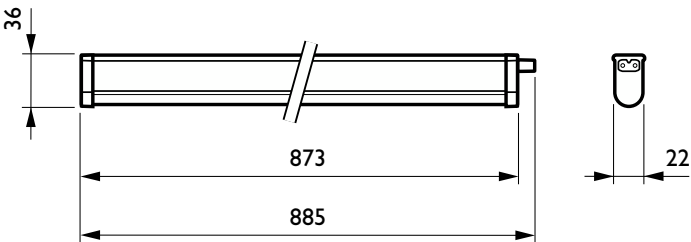
Performance ambient temperature Tq	25 °C
------------------------------------	-------

Suitable for random switching	No
-------------------------------	----

Product Data

Order product name	BN130C LED8S/840 PSU L885
Full product name	BN130C LED8S/840 PSU L885
Full EOC	871016329649499
Order code	29649499
Material no. (12 NC)	911401704772
SAP numerator – quantity per pack	1
EAN/UPC – Product/Case	8710163296494
Numerator – packs per outer box	24
EAN/UPC – Case	8710163296579

Dimensional drawing



Product	A
BN130C LED8S/840 PSU L885	885 mm

