



GreenSpace Surface-mounted

SM291C LED10/840 PSU WH GM

GreenSpace Surface-mounted, 10 W, 1000 lm, 4000 K, High-gloss mirror, Finger-protected

Philips GreenSpace Surface-mounted LED Downlight delivers a superior LED alternative that's up to 66% more energy efficient than the conventional downlight retrofits. Blending seamlessly into its environment, GreenSpace Surface-mounted LED Downlight mimics the form of conventional recessed downlights minus the associated high energy and maintenance costs. Philips GreenSpace Surface-mounted LED Downlight is also ideal for all commercial lighting applications as well as public indoor space where there is limited space in the ceiling.

Product data

General Information		Light Technical	
Light source replaceable	No	Luminous Flux	1,000 lm
Number of gear units	1 unit	Correlated Color Temperature (Nom)	4000 K
Driver included	Yes	Luminous Efficacy (rated) (Nom)	100 lm/W
Light source engine type	LED	Color rendering index (CRI)	>80
Service tag	Yes	Beam angle of light source	- degree(s)
CE mark	CE mark	Light source color	840 neutral white
Warranty period	3 years	Optic type	High-gloss mirror
Flammability mark	-	Optical cover type	Reflector
ENEC mark	-	Luminaire light beam spread	90°
Glow-wire test	Temperature 750 °C, duration 5 s	Operating and Electrical	
EU RoHS compliant	No	Input Voltage	220 to 240 V
		Line Frequency	50 or 60 Hz

GreenSpace Surface-mounted

Inrush current	11 A
Inrush time	0.003 ms
Power Consumption	10 W
Power Factor (Fraction)	0.9
Connection	-
Cable	-
Number of products on MCB of 16 A type B	30

Temperature

Ambient temperature range	-20 to +40 °C
---------------------------	---------------

Controls and Dimming

Dimmable	No
Driver/power unit/transformer	Power supply unit (On/Off)
Control interface	-
Constant light output	No

Mechanical and Housing

Housing Material	Aluminum die cast
Reflector material	Aluminum
Optic material	Aluminum
Optical cover material	-
Fixation material	-
Housing Color	White
Optical cover finish	-
Overall length	0 mm
Overall width	0 mm
Overall height	135 mm
Overall diameter	160 mm
Dimensions (Height x Width x Depth)	135 x 0 x 0 mm

Approval and Application

Ingress protection code	IP20 [Finger-protected]
Mech. impact protection code	IK02 [0.2 J standard]
Protection class IEC	Safety class I

Initial Performance (IEC Compliant)

Luminous flux tolerance	+/-10%
Initial chromaticity	(0.38, 0.38) SDCM <5
Power consumption tolerance	+/-10%

Over Time Performance (IEC Compliant)

Driver failure rate at 5000 h	1.00 %
Median useful life L70B50	50,000 hour(s)
Median useful life L80B50	40,000 hour(s)
Median useful life L90B50	20,000 hour(s)

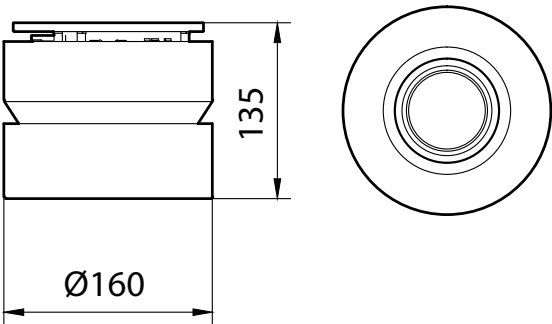
Application Conditions

Suitable for random switching	No
-------------------------------	----

Product Data

Order product name	SM291C LED10/840 PSU WH GM
Full product name	SM291C LED10/840 PSU WH GM
Full product code	872016972365800
Order code	72365800
Material Nr. (12NC)	911401847299
Numerator - Quantity Per Pack	1
EAN/UPC - Product/Case	8720169723658
Numerator - Packs per outer box	1
EAN/UPC - Case	8720169723658

Dimensional drawing



GreenSpace Surface-mounted

