



# GreenSpace Surface-mounted

## SM294C LED40/830 PSU WH GM

GreenSpace Surface-mounted, 38 W, 3800 lm, 3000 K, High-gloss mirror, Finger-protected

Philips GreenSpace Surface-mounted LED Downlight delivers a superior LED alternative that's up to 66% more energy efficient than the conventional downlight retrofits. Blending seamlessly into its environment, GreenSpace Surface-mounted LED Downlight mimics the form of conventional recessed downlights minus the associated high energy and maintenance costs. Philips GreenSpace Surface-mounted LED Downlight is also ideal for all commercial lighting applications as well as public indoor space where there is limited space in the ceiling.

### Product data

General Information		Light Technical	
Light source replaceable	No	Luminous Flux	3,800 lm
Number of gear units	1 unit	Correlated Color Temperature (Nom)	3000 K
Driver included	Yes	Luminous Efficacy (rated) (Nom)	100 lm/W
Light source engine type	LED	Color rendering index (CRI)	>80
Service tag	Yes	Beam angle of light source	- degree(s)
CE mark	CE mark	Light source color	830 warm white
Warranty period	3 years	Optic type	High-gloss mirror
Flammability mark	-	Optical cover type	Reflector
ENEC mark	-	Luminaire light beam spread	60°
Glow-wire test	Temperature 750 °C, duration 5 s	Operating and Electrical	
EU RoHS compliant	No	Input Voltage	220 to 240 V
		Line Frequency	50 or 60 Hz

GreenSpace Surface-mounted

Inrush current	4 A
Inrush time	0.05 ms
Power Consumption	38 W
Power Factor (Fraction)	0.9
Connection	-
Cable	-
Number of products on MCB of 16 A type B	24

Temperature

Ambient temperature range	-20 to +40 °C
---------------------------	---------------

Controls and Dimming

Dimmable	No
Driver/power unit/transformer	Power supply unit (On/Off)
Control interface	-
Constant light output	No

Mechanical and Housing

Housing Material	Aluminum die cast
Reflector material	Aluminum
Optic material	Aluminum
Optical cover material	-
Fixation material	-
Housing Color	White
Optical cover finish	-
Overall length	0 mm
Overall width	0 mm
Overall height	170 mm
Overall diameter	160 mm
Dimensions (Height x Width x Depth)	170 x 0 x 0 mm

Approval and Application

Ingress protection code	IP20 [Finger-protected]
Mech. impact protection code	IK02 [0.2 J standard]
Protection class IEC	Safety class I

Initial Performance (IEC Compliant)

Luminous flux tolerance	+/-10%
Initial chromaticity	(0.44, 0.40) SDCM <5
Power consumption tolerance	+/-10%

Over Time Performance (IEC Compliant)

Driver failure rate at 5000 h	1.00 %
Median useful life L70B50	50,000 hour(s)
Median useful life L80B50	40,000 hour(s)
Median useful life L90B50	20,000 hour(s)

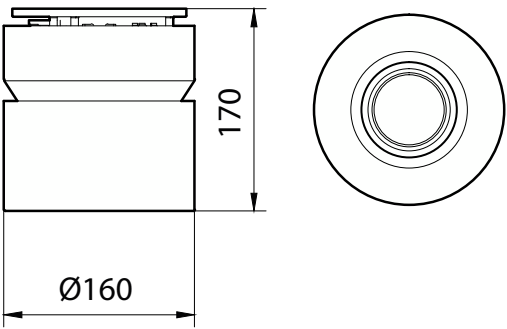
Application Conditions

Suitable for random switching	No
-------------------------------	----

Product Data

Order product name	SM294C LED40/830 PSU WH GM
Full product name	SM294C LED40/830 PSU WH GM
Full product code	872016972366500
Order code	72366500
Material Nr. (12NC)	911401848599
Numerator - Quantity Per Pack	1
EAN/UPC - Product/Case	8720169723665
Numerator - Packs per outer box	1
EAN/UPC - Case	8720169723665

Dimensional drawing



## GreenSpace Surface-mounted

