



ColorReach Compact Powercore RGBW/RGBA

ColorReach Compact Powercore, RGBW, 5° Native (no spread lens), UL/CE

ColorReach Compact Powercore, RGBW, 5° Native (no spread lens), UL/CE

ColorReach Compact Powercore RGBA/RGBW combines all the benefits of LED-based lighting and control in a premium exterior long-throw dynamic colour-changing luminaire for lighting tall buildings, bridges and iconic structures. This compact luminaire delivers intense, energy-efficient output at a reasonable price, opening up new possibilities for exterior illumination. ColorReach Compact Powercore offers a range of accessories that allow for customisable beam angles for floodlighting, spotlighting, wall washing and grazing, along with the efficiency and cost-effectiveness of Powercore technology in a rugged die-cast aluminium housing. Custom configurations with custom channels of white or colour LED sources are also available to support special applications.

Product data

General Information		UL mark	
Light source colour	RGBW	Angle	0 to 30°
Light source replaceable	No	Operating and Electrical	
Driver included	Yes	Input Voltage	100 to 277 V
Optical cover/lens type	GT [Tempered glass]	Input frequency	50 to 60 Hz
Luminaire light beam spread	5°		
CE mark	CE mark		

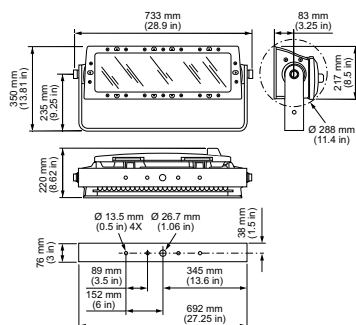
ColorReach Compact Powercore RGBW/RGBA

Controls and Dimming	
Dimmable	No
Mechanical and Housing	
Housing material	Aluminium die-cast
Optic material	Polycarbonate
Optical cover/lens material	Tempered glass
Optical cover/lens shape	Flat
Optical cover/lens finish	Clear
Colour	Black
Approval and Application	
Ingress protection code	IP66 [Dust penetration-protected, jet-proof]
Mech. impact protection code	IK07 [2 J reinforced]
Initial Performance (IEC Compliant)	
Initial input power	135 W
Over Time Performance (IEC Compliant)	
Lumen Maintenance 70% at 25 °C	100000
Calculated	

Lumen Maintenance 70% at 50 °C	100000
Calculated	
Application Conditions	
Ambient temperature range	-40 to +50 °C
Product Data	
Full product code	871829139028200
Order product name	DCP403 RGBW 100-277V UL CE
EAN/UPC – product	8718291390282
Order code	423-000015-00
SAP numerator – quantity per pack	1
Numerator – packs per outer box	1
SAP material	912400133581
SAP net weight (piece)	23.400 kg
Commercial Code	423-000015-00
Catalogue number description	ColorReach Compact Powercore, RGBW, 5° Native (no spread lens), UL/CE



Dimensional drawing



Reach Compact

