



FastSet, Surface Mounted

SM150C LED24S/840 PSU TW3 PI5 L602

840 neutral white, Power supply unit (On/Off), Connection unit 5-pole

Upgrading to LED is a key trend in office applications. Recognizing the need for an easy to use luminaire that can work as the perfect 1:1 replacement of conventional office lighting, we developed FastSet. This luminaire is an ideal choice to quickly achieve the benefits of LED lighting since being the perfect 1:1 replacement, no additional lighting calculation is needed prior to the LED lighting installation. The luminaire simply fits into all different indoor applications. Moreover, it is available in both standalone and through-wiring versions, which makes the luminaires ready-to-connect at a later stage.

Product data

General Information	
Light source replaceable	No
Number of gear units	1 unit
Driver included	Yes
Remarks	*-Per Lighting Europe guidance paper "Evaluating performance of LED based luminaires - January 2018": statistically there is no relevant difference in lumen maintenance between B50 and for example B10. Therefore, the median useful life (B50) value also represents the B10 value.
Lighting Technology	LED
Value ladder	Performance

CE mark	Yes
Warranty period	5 years
Flammability mark	For mounting on normally flammable surfaces
ENEC mark	-
Glow-wire test	Temperature 850 °C, duration 30 s
EU RoHS compliant	Yes
Light Technical	
Luminous Flux	2,400 lm
Correlated Color Temperature (Nom)	4000 K
Luminous Efficacy (rated) (Nom)	120 lm/W
Color rendering index (CRI)	≥80

FastSet, Surface Mounted

Beam angle of light source	116 degree(s)
Light source color	840 neutral white
Optic type	Wide beam
Luminaire light beam spread	100°
Unified glare rating CEN	25

Operating and Electrical

Input Voltage	220-240 V
Line Frequency	50 to 60 Hz
Inrush current	8 A
Inrush time	0.06 ms
Power Consumption	20 W
Power Factor (Fraction)	0.9
Connection	Connection unit 5-pole
Cable	-
Number of products on MCB of 16 A type B	24

Temperature

Ambient temperature range	0 to +35 °C
---------------------------	-------------

Controls and Dimming

Dimmable	No
Driver/power unit/transformer	Power supply unit (On/Off)
Constant light output	No

Mechanical and Housing

Housing Material	Metal
Reflector material	-
Optic material	Polycarbonate
Optical cover material	Polycarbonate
Fixation material	Steel
Housing Color	White
Optical cover finish	Opal
Overall length	602 mm
Overall width	160 mm
Overall height	61 mm

Dimensions (Height x Width x Depth)	61 x 160 x 602 mm
-------------------------------------	-------------------

Approval and Application

Ingress protection code	IP44 [Wire-protected, splash-proof]
Mech. impact protection code	IK03 [0.3 J]
Sustainability rating	-
Protection class IEC	Safety class I

Initial Performance (IEC Compliant)

Luminous flux tolerance	+/-10%
Initial chromaticity	(0.3828, 0.3803) 5SDCM
Power consumption tolerance	+/-10%

Over Time Performance (IEC Compliant)

Control gear failure rate at median useful life 50000 h	5 %
Lumen maintenance at median useful life* 50000 h	L80

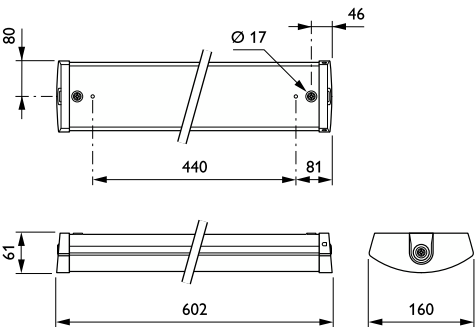
Application Conditions

Performance ambient temperature Tq	25 °C
Suitable for random switching	Not applicable

Product Data

Order product name	SM150C LED24S/840 PSU TW3 PI5 L602
Full product name	SM150C LED24S/840 PSU TW3 PI5 L602
Full product code	871869938123399
Order code	38123399
Material Nr. (12NC)	912401483055
Numerator - Quantity Per Pack	1
EAN/UPC - Product/Case	8718699381233
Numerator - Packs per outer box	6
EAN/UPC - Case	8718699381295

Dimensional drawing



FastSet, Surface Mounted

