



HID-HighPower for SON/MH/HPL/HPI

BHL 1000 L78-A2 230/240V 50Hz HP-207

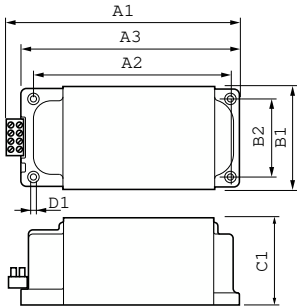
Encapsulated ballasts for use with SON (T) (Plus), HPL, HPI and MH lamps with rated wattages of 1000 W and above

Product data

Operating and Electrical		Full product name	
Input Voltage	230 V (default) or 240 V	Full product code	BHL 1000 L78-A2 230/240V 50Hz HP-207
Line Frequency	50 Hz	Order code	871150006237600
Input Frequency	50 Hz	Material Nr. (12NC)	913700217303
Wiring		Numerator - Quantity Per Pack	1
Connector Type	Screw	EAN/UPC - Product/Case	8711500996657
Approval and Application		Numerator - Packs per outer box	1
Approval Marks	CE marking ENEC certificate	EAN/UPC - Case	8711500062376
Product Data			
Order product name	BHL 1000 L78-A2 230/240V 50Hz HP-207		

HID-HighPower for SON/MH/HPL/HPI

Dimensional drawing



Product	D1	C1	A1	A2	A3	B1	B2
BHL 1000 L78-A2	6.5	102.0	207.0	172.0	196.0	117.0	88.0
230/240V 50Hz	mm	mm	mm	mm	mm	mm	mm
HP-207							

