

HID-HeavyDuty BSN semi-parallel for SON/CDO/MH/HPI

BSN 150 L33-TS 230V 50Hz HD2-126

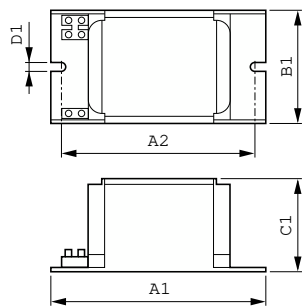
Encapsulated electromagnetic copper/iron ballasts for use with an external semi-parallel ignitor for CDM, CDO, MH, HPI (Plus) and SON lamps (no ignitor needed for SON-I lamps)

Product data

Operating and Electrical		Full product name	
Input Voltage	230 V	Full product code	871150005960430
Line Frequency	50 Hz	Order code	05960430
Input Frequency	50 Hz	Material Nr. (12NC)	913700226126
Wiring		Numerator - Quantity Per Pack	1
Connector Type	Screw	EAN/UPC - Product/Case	8711500059604
Approval and Application		Numerator - Packs per outer box	6
Approval Marks	CE marking ENEC certificate	EAN/UPC - Case	8711500059611
Product Data			
Order product name	BSN 150 L33-TS 230V 50Hz HD2-126		

HID-HeavyDuty BSN semi-parallel for SON/CDO/MH/HPI

Dimensional drawing



Product	D1	C1	A1	A2	B1
BSN 150 L33-TS 230V 50Hz HD2-126	6.2 mm	66.0 mm	126.0 mm	107.5 mm	81.0 mm

