

HID-HeavyDuty BSN semi-parallel for SON/CDO/MH/HPI

BSN 150 L33-TS 230V 50Hz HD2-126

Encapsulated electromagnetic copper/iron ballasts for use with an external semi-parallel ignitor for CDM, CDO, MH, HPI (Plus) and SON lamps

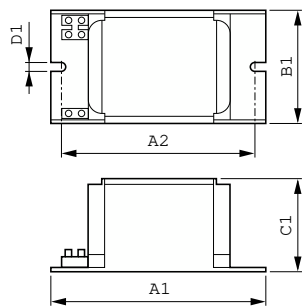
Product data

Operating and Electrical	
Input Voltage	230 V
Line Frequency	50 Hz
Input Frequency	50 Hz
Wiring	
Connector Type	Screw
Approval and Application	
Approval Marks	CE marking ENEC certificate
Product Data	
Order product name	BSN 150 L33-TS 230V 50Hz HD2-126

Full product name	BSN 150 L33-TS 230V 50Hz HD2-126
Full product code	871150005960430
Order code	913700226126
Material Nr. (12NC)	913700226126
Numerator - Quantity Per Pack	1
EAN/UPC - Product/Case	8711500059604
Numerator - Packs per outer box	6
EAN/UPC - Case	8711500059611

HID-HeavyDuty BSN semi-parallel for SON/CDO/MH/HPI

Dimensional drawing



Product	D1	C1	A1	A2	B1
BSN 150 L33-TS 230V 50Hz HD2-126	6.2 mm	66.0 mm	126.0 mm	107.5 mm	81.0 mm

