

# HID-HeavyDuty BSN semi-parallel for SON/CDO/MH/HPI

## BSN 250 L34-TS 240V 50Hz HD2-160

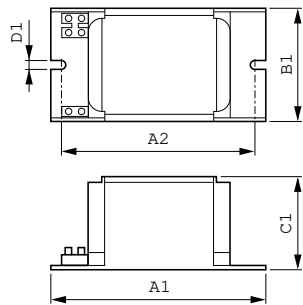
Encapsulated electromagnetic copper/iron ballasts for use with an external semi-parallel ignitor for CDM, CDO, MH, HPI (Plus) and SON lamps

### Product data

<b>Operating and Electrical</b>		<b>Full product name</b>		BSN 250 L34-TS 240V 50Hz HD2-160	
Input Voltage	240 V	<b>Full product code</b>		871150005966630	
Line Frequency	50 Hz	<b>Order code</b>		913700226426	
Input Frequency	50 Hz	<b>Material Nr. (12NC)</b>		913700226426	
		<b>Numerator - Quantity Per Pack</b>		1	
		<b>EAN/UPC - Product/Case</b>		8711500059666	
		<b>Numerator - Packs per outer box</b>		6	
		<b>EAN/UPC - Case</b>		8711500059673	
<b>Approval and Application</b>					
Approval Marks		CE marking ENEC certificate			
<b>Product Data</b>					
Order product name		BSN 250 L34-TS 240V 50Hz HD2-160			

# HID-HeavyDuty BSN semi-parallel for SON/CDO/MH/HPI

## Dimensional drawing



Product	D1	C1	A1	A2	B1
BSN 250 L34-TS 240V 50Hz	6.2 mm	66.0 mm	160.0 mm	141.5 mm	81.0 mm
HD2-160					

