

HID-Basic BSN/BMH MK4 semi-parallel for SON/CDO/CDM/MH/ HPI

BSN 70 K407-ITS 230/240V 50Hz BC1-118

Impregnated electromagnetic copper ballasts for use with an external semi-parallel ignitor for CDM, CDO, MH, HPI (Plus) and SON lamps

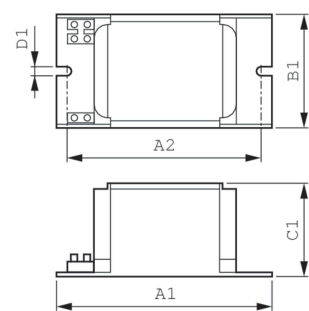
Product data

Operating and Electrical	
Input Voltage	230 V (default) or 240 V
Line Frequency	50 Hz
Input Frequency	50 Hz
Wiring	
Connector Type	Screw
Approval and Application	
Approval Marks	CE marking ENEC certificate
Product Data	
Order product name	BSN 70 K407-ITS 230/240V 50Hz BC1-118

Full product name	BSN 70 K407-ITS 230/240V 50Hz BC1-118
Full product code	872790088694800
Order code	88694800
Material Nr. (12NC)	913700277026
Numerator - Quantity Per Pack	1
EAN/UPC - Product/Case	8711500881533
Numerator - Packs per outer box	6
EAN/UPC - Case	8727900886948

HID-Basic BSN/BMH MK4 semi-parallel for SON/CDO/CDM/MH/HPI

Dimensional drawing



Product	D1	C1	A1	A2	B1
BSN 70 K407-ITS 230/240V 50Hz	6.2 mm	52.0 mm	118.0 mm	94.0 mm	61.0 mm
BC1-118					

