

# HID-Basic BSN/BMH MK4 semi-parallel for SON/CDO/CDM/MH/ HPI

## BSN 100 K407-ITS 230/240V 50Hz BC1-123

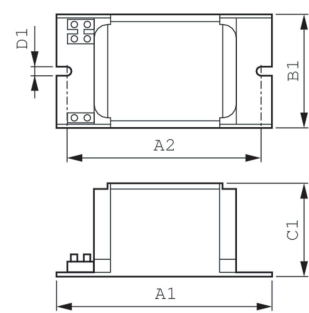
Impregnated electromagnetic copper ballasts for use with an external semi-parallel ignitor for CDM, CDO, MH, HPI (Plus) and SON lamps

### Product data

<b>Operating and Electrical</b>		<b>Full product name</b>		BSN 100 K407-ITS 230/240V 50Hz BC1-123	
<b>Input Voltage</b>	230 V (default) or 240 V	<b>Full product code</b>		872790088695500	
<b>Line Frequency</b>	50 Hz	<b>Order code</b>		88695500	
<b>Input Frequency</b>	50 Hz	<b>Material Nr. (12NC)</b>		913700277226	
<b>Wiring</b>		<b>Numerator - Quantity Per Pack</b>		1	
<b>Connector Type</b>	Screw	<b>EAN/UPC - Product/Case</b>		8711500881540	
<b>Approval and Application</b>		<b>Numerator - Packs per outer box</b>		6	
<b>Approval Marks</b>	CE marking ENEC certificate	<b>EAN/UPC - Case</b>		8727900886955	
<b>Product Data</b>					
<b>Order product name</b>	BSN 100 K407-ITS 230/240V 50Hz BC1-123				

# HID-Basic BSN/BMH MK4 semi-parallel for SON/CDO/CDM/MH/HPI

## Dimensional drawing



Product	D1	C1	A1	A2	B1
BSN 100 K407-ITS 230/240V 50Hz	6.2 mm	52.0 mm	123.0 mm	98.0 mm	61.0 mm
BC1-123					

