

HID-Basic BSN/BMH MK4 semi-parallel for SON/CDO/CDM/MH/ HPI

BSN 100 K427-ITS 230/240V 50Hz BC1-123

Impregnated electromagnetic copper ballasts for use with an external semi-parallel ignitor for CDM, CDO, MH, HPI (Plus) and SON lamps

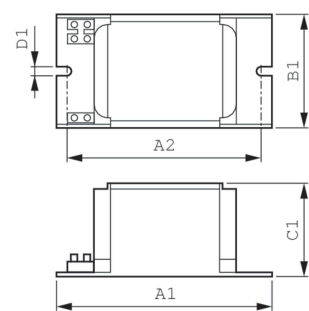
Product data

Operating and Electrical	
Input Voltage	230 V (default) or 240 V
Line Frequency	50 Hz
Input Frequency	50 Hz
Wiring	
Connector Type	Insert
Approval and Application	
Approval Marks	CE marking ENEC certificate
Product Data	
Order product name	BSN 100 K427-ITS 230/240V 50Hz BC1-123

Full product name	BSN 100 K427-ITS 230/240V 50Hz BC1-123
Full product code	872790088915400
Order code	913700277327
Material Nr. (12NC)	913700277327
Numerator - Quantity Per Pack	1
EAN/UPC - Product/Case	8711500998972
Numerator - Packs per outer box	648
EAN/UPC - Case	8727900889154

HID-Basic BSN/BMH MK4 semi-parallel for SON/CDO/CDM/MH/HPI

Dimensional drawing



Product	D1	C1	A1	A2	B1
BSN 100 K427-ITS 230/240V 50Hz	6.2 mm	52.0 mm	123.0 mm	98.0 mm	61.0 mm
BC1-123					

