



# HID-Basic BSN/BMH MK4 semi-parallel for SON/CDO/CDM/MH/ HPI

## BSN 150 K407-ITS 230/240V 50Hz BC2-134

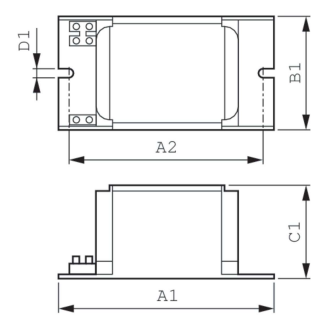
Impregnated electromagnetic copper ballasts for use with an external semi-parallel ignitor for CDM, CDO, MH, HPI (Plus) and SON lamps

### Product data

<b>Operating and Electrical</b>		<b>Full product name</b>		BSN 150 K407-ITS 230/240V 50Hz BC2-134	
<b>Input Voltage</b>	230 V (default) or 240 V	<b>Full product code</b>		872790088698600	
<b>Line Frequency</b>	50 Hz	<b>Order code</b>		88698600	
<b>Input Frequency</b>	50 Hz	<b>Material Nr. (12NC)</b>		913700277426	
<b>Wiring</b>		<b>Numerator - Quantity Per Pack</b>		1	
<b>Connector Type</b>		<b>EAN/UPC - Product/Case</b>		8711500881557	
		<b>Numerator - Packs per outer box</b>		6	
		<b>EAN/UPC - Case</b>		8727900886986	
<b>Approval and Application</b>					
<b>Approval Marks</b>		CE marking ENEC certificate			
<b>Product Data</b>					
<b>Order product name</b>		BSN 150 K407-ITS 230/240V 50Hz BC2-134			

HID-Basic BSN/BMH MK4 semi-parallel for SON/CDO/CDM/MH/HPI

Dimensional drawing



Product	D1	C1	A1	A2	B1
BSN 150 K407-ITS 230/240V 50Hz	6.2 mm	65.0 mm	134.0 mm	113.0 mm	76.0 mm
BC2-134					

