

HID-Basic BSN/BMH MK4 semi-parallel for SON/CDO/CDM/MH/ HPI

BSN 250 K407-ITS 230/240V 50Hz BC2-160

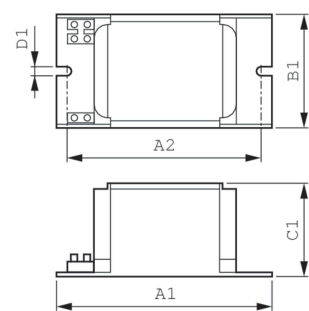
Impregnated electromagnetic copper ballasts for use with an external semi-parallel ignitor for CDM, CDO, MH, HPI (Plus) and SON lamps

Product data

Operating and Electrical		Full product name		BSN 250 K407-ITS 230/240V 50Hz BC2-160	
Input Voltage	230 V (default) or 240 V	Full product code		872790088702000	
Line Frequency	50 Hz	Order code		913700277626	
Input Frequency	50 Hz	Material Nr. (12NC)		913700277626	
		Numerator - Quantity Per Pack		1	
		EAN/UPC - Product/Case		8711500881564	
		Numerator - Packs per outer box		6	
		EAN/UPC - Case		8727900887020	
Approval and Application					
Approval Marks	CE marking ENEC certificate				
Product Data					
Order product name	BSN 250 K407-ITS 230/240V 50Hz BC2-160				

HID-Basic BSN/BMH MK4 semi-parallel for SON/CDO/CDM/MH/HPI

Dimensional drawing



Product	D1	C1	A1	A2	B1
BSN 250 K407-ITS 230/240V 50Hz	6.2 mm	65.0 mm	160.0 mm	139.0 mm	76.0 mm
BC2-160					

