

# HID-Basic BSN/BMH semi-parallel for SON/CDO/CDM/MH/ HPI

## BMH 35 K302-ITS 230V 50Hz BC1-118

Impregnated electromagnetic copper/iron ballasts for use with an external semi parallel ignitor for CDM, CDO, MH, HPI (Plus) and SON lamps

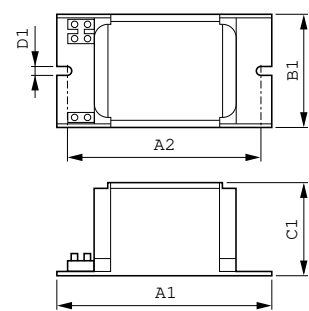
### Product data

Operating and Electrical	
Input Voltage	230 V
Line Frequency	50 Hz
Input Frequency	50 Hz
Wiring	
Connector Type	Insert
Approval and Application	
Approval Marks	CE marking ENEC certificate
Product Data	
Order product name	BMH 35 K302-ITS 230V 50Hz BC1-118

Full product name	BMH 35 K302-ITS 230V 50Hz BC1-118
Full product code	872790094017600
Order code	94017600
Material Nr. (12NC)	913700280526
Numerator - Quantity Per Pack	1
EAN/UPC - Product/Case	8727900940176
Numerator - Packs per outer box	6
EAN/UPC - Case	8727900940183

HID-Basic BSN/BMH semi-parallel for SON/CDO/CDM/MH/HPI

Dimensional drawing



Product	D1	C1	A1	A2	B1
BMH 35 K302-ITS 230V 50Hz BC1-118	6.2 mm	52.0 mm	118.0 mm	94.0 mm	61.0 mm

