

HID-Basic BSN/BMH semi-parallel for SON/CDO/CDM/MH/ HPI

BMH 35 K407-ITS 230/240V 50Hz BC1-118

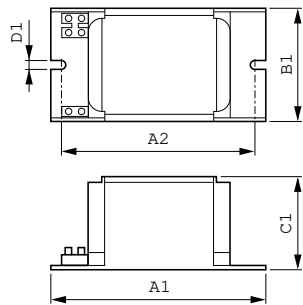
Impregnated electromagnetic copper ballasts for use with an external semi-parallel ignitor for CDM, CDO, MH, HPI (Plus) and SON lamps

Product data

Operating and Electrical		Full product name		BMH 35 K407-ITS 230/240V 50Hz BC1-118	
Input Voltage	230 V (default) or 240 V	Full product code		872790094021300	
Line Frequency	50 Hz	Order code		913700280626	
Input Frequency	50 Hz	Material Nr. (12NC)		913700280626	
		Numerator - Quantity Per Pack		1	
		EAN/UPC - Product/Case		8727900940213	
		Numerator - Packs per outer box		6	
		EAN/UPC - Case		8727900940220	
Approval and Application					
Approval Marks	CE marking ENEC certificate				
Product Data					
Order product name	BMH 35 K407-ITS 230/240V 50Hz BC1-118				

HID-Basic BSN/BMH semi-parallel for SON/CDO/CDM/MH/HPI

Dimensional drawing



Product	D1	C1	A1	A2	B1
BMH 35 K407-ITS 230/240V 50Hz	6.2 mm	52.0 mm	118.0 mm	94.0 mm	61.0 mm
BC1-118					

