

# Gear for SDW-T lamps

## BSL 100 K307 230/240V 50Hz BC1-123

CSLS electronic control unit with impregnated (HID "BASIC") or encapsulated (HID "Heavy Duty") electromagnetic ballasts

### Warnings and Safety

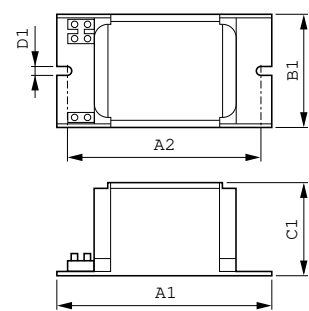
- Climatic suitability CSLS and HID BASIC: restricted to built in situations under normal conditions
- Climatic suitability CSLS and HID Heavy Duty: use in luminaires under humid conditions (not drip-proof)

### Product data

Operating and Electrical		Full product name	
Input Voltage	230 V (default) or 240 V	Full product code	872790094058900
Line Frequency	50 Hz	Order code	94058900
Input Frequency	50 Hz	Material Nr. (12NC)	913700281126
Wiring		Numerator - Quantity Per Pack	1
Connector Type	Screw	EAN/UPC - Product/Case	8727900940589
Approval and Application		Numerator - Packs per outer box	6
Approval Marks	CE marking ENEC certificate	EAN/UPC - Case	8727900940596
Product Data			
Order product name	BSL 100 K307-TS 230/240V 50Hz BC1-118		

# Gear for SDW-T lamps

## Dimensional drawing



Product	D1	C1	A1	A2	B1
BSL 100 K307-TS 230/240V 50Hz	6.2 mm	52.0 mm	123.0 mm	98.0 mm	61.0 mm
BC1-118					

