

# Gear for SDW-T lamps

## BSL 100 K307-TS 230/240V 50Hz BC1-118

CSLS electronic control unit with impregnated (HID 'BASIC' ) or encapsulated (HID 'Heavy Duty' ) electromagnetic ballasts

### Warnings and Safety

- Climatic suitability CSLS and HID BASIC: restricted to built in situations under normal conditions
- Climatic suitability CSLS and HID Heavy Duty: use in luminaires under humid conditions (not drip-proof)

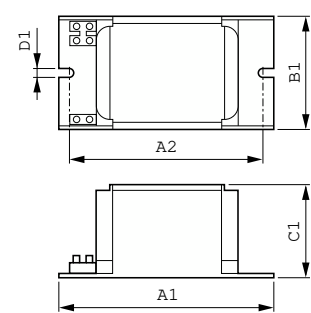
### Product data

Operating and Electrical	
Input Voltage	230 V (default) or 240 V
Line Frequency	50 Hz
Input Frequency	50 Hz
Wiring	
Connector Type	Screw
Approval and Application	
Approval Marks	CE marking ENEC certificate
Product Data	
Order product name	BSL 100 K307-TS 230/240V 50Hz BC1-118

Full product name	BSL 100 K307-TS 230/240V 50Hz BC1-118
Full product code	872790094058900
Order code	913700281126
Material Nr. (12NC)	913700281126
Numerator - Quantity Per Pack	1
EAN/UPC - Product/Case	8727900940589
Numerator - Packs per outer box	6
EAN/UPC - Case	8727900940596

Gear for SDW-T lamps

Dimensional drawing



Product	D1	C1	A1	A2	B1
BSL 100 K307-TS 230/240V 50Hz	6.2 mm	52.0 mm	123.0 mm	98.0 mm	61.0 mm
BC1-118					

