



HID-Basic BSN/BMH semi-parallel for SON/CDO/CDM/MH/ HPI

BSN 150 K302-I 230V 50Hz BC2-126

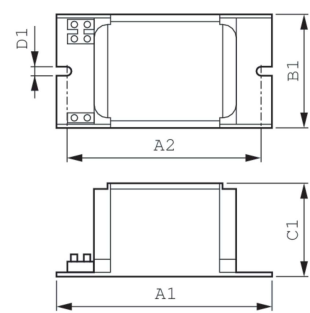
Impregnated electromagnetic copper/iron ballasts for use with an external semi parallel ignitor for CDM, CDO, MH, HPI (Plus) and SON lamps

Product data

Operating and Electrical		Full product name		BSN 150 K302-I 230V 50Hz BC2-126	
Input Voltage	230 V	Full product code		872790092827300	
Line Frequency	50 Hz	Order code		92827300	
Input Frequency	50 Hz	Material Nr. (12NC)		913700283026	
Wiring		Numerator - Quantity Per Pack		1	
Connector Type	Screw	EAN/UPC - Product/Case		8727900928273	
Approval and Application		Numerator - Packs per outer box		6	
Approval Marks	CE marking ENEC certificate	EAN/UPC - Case		8727900928280	
Product Data					
Order product name	BSN 150 K302-I 230V 50Hz BC2-126				

HID-Basic BSN/BMH semi-parallel for SON/CDO/CDM/MH/HPI

Dimensional drawing



Product	C1	A1	B1
BSN 150 K302-I 230V 50Hz BC2-126	65.0 mm	126.0 mm	76.0 mm

