

# HID-Basic BSN/BMH series multi-wattage for SON/CDO/CDM/MH/HPI

## BSN 250/150 K407-TS 230/240V 50Hz

Impregnated electromagnetic copper/iron double-wattage ballasts for use with an external series (superimposed) ignitor for CDO, MH, HPI (Plus) and SON lamps

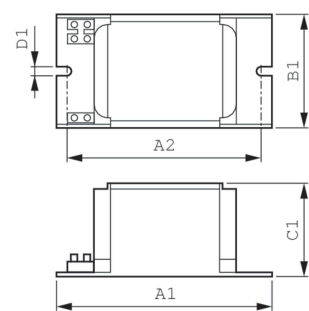
### Product data

Operating and Electrical	
Input Voltage	230 V (default) or 240 V
Line Frequency	50 Hz
Input Frequency	50 Hz
Wiring	
Connector Type	Screw
Approval and Application	
Approval Marks	CE marking ENEC certificate
Product Data	
Order product name	BSN 250/150 K407-TS 230/240V 50Hz

Full product name	BSN 250/150 K407-TS 230/240V 50Hz
Full product code	872790094092300
Order code	913700286226
Material Nr. (12NC)	913700286226
Numerator - Quantity Per Pack	1
EAN/UPC - Product/Case	8727900940923
Numerator - Packs per outer box	6
EAN/UPC - Case	8727900940930

# HID-Basic BSN/BMH series multi-wattage for SON/CDO/CDM/MH/HPI

## Dimensional drawing



Product	D1	C1	A1	A2	B1
BSN 250/150 K407-TS 230/240V 50Hz	6.2 mm	65.0 mm	160.0 mm	139.0 mm	76.0 mm

