

# HID-Basic BSN/BMH series multi-wattage for SON/CDO/CDM/MH/HPI

## BSN 70/50 K407-TS 230/240V 50Hz BC1-118

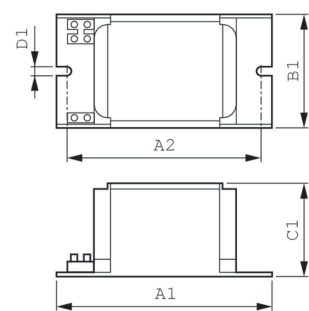
Impregnated electromagnetic copper/iron double-wattage ballasts for use with an external series (superimposed) ignitor for CDO, MH, HPI (Plus) and SON lamps

### Product data

<b>Operating and Electrical</b>		<b>Full product name</b>	BSN 70/50 K407-TS 230/240V 50Hz BC1-118
<b>Input Voltage</b>	230 V (default) or 240 V	<b>Full product code</b>	872790094047300
<b>Line Frequency</b>	50 Hz	<b>Order code</b>	913700287226
<b>Input Frequency</b>	50 Hz	<b>Material Nr. (12NC)</b>	913700287226
		<b>Numerator - Quantity Per Pack</b>	1
		<b>EAN/UPC - Product/Case</b>	8727900940473
		<b>Numerator - Packs per outer box</b>	6
		<b>EAN/UPC - Case</b>	8727900940480
<b>Wiring</b>			
<b>Connector Type</b>	Screw		
<b>Approval and Application</b>			
<b>Approval Marks</b>	CE marking ENEC certificate		
<b>Product Data</b>			
<b>Order product name</b>	BSN 70/50 K407-TS 230/240V 50Hz BC1-118		

# HID-Basic BSN/BMH series multi-wattage for SON/CDO/CDM/MH/HPI

## Dimensional drawing



Product	D1	C1	A1	A2	B1
BSN 70/50 K407-TS 230/240V 50Hz	6.2 mm	52.0 mm	118.0 mm	94.0 mm	61.0 mm
BC1-118					

