

HID-Basic BSN/BMH series multi-wattage for SON/CDO/CDM/MH/HPI

BSN 70/50 K427-TS 230/240V 50Hz BC1-118

Impregnated electromagnetic copper/iron double-wattage ballasts for use with an external series (superimposed) ignitor for CDO, MH, HPI (Plus) and SON lamps

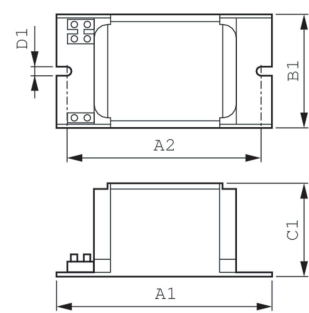
Product data

Operating and Electrical	
Input Voltage	230 V (default) or 240 V
Line Frequency	50 Hz
Input Frequency	50 Hz
Wiring	
Connector Type	Screw
Approval and Application	
Approval Marks	CE marking ENEC certificate
Product Data	
Order product name	BSN 70/50 K427-TS 230/240V 50Hz BC1-118

Full product name	BSN 70/50 K427-TS 230/240V 50Hz BC1-118
Full product code	872790095368800
Order code	913700287327
Material Nr. (12NC)	913700287327
Numerator - Quantity Per Pack	1
EAN/UPC - Product/Case	8727900953688
Numerator - Packs per outer box	756
EAN/UPC - Case	8727900953695

HID-Basic BSN/BMH series multi-wattage for SON/CDO/CDM/MH/HPI

Dimensional drawing



Product	C1	A1	B1
BSN 70/50 K427-TS 230/240V 50Hz BC1-118	52.0 mm	118.0 mm	61.0 mm

