

# HID-Basic BSN/BMH series for SON/CDO/MH/HPI

## BSN 250 K307-TS-R 230/240V 50Hz BC2-160

Impregnated electromagnetic copper/iron ballasts for use with an external series (superimposed) ignitor for CDO, MH, HPI (Plus) and SON lamps (no ignitor needed for SON-I lamps)

### Warnings and Safety

- Climatic suitability: restricted to built-in situations where relative humidity is limited

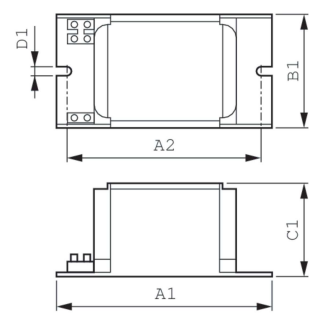
### Product data

Operating and Electrical	
Input Voltage	230 V (default) or 240 V
Line Frequency	50 Hz
Input Frequency	50 Hz
Wiring	
Connector Type	Screw
Approval and Application	
Approval Marks	CE marking ENEC certificate
Product Data	
Order product name	BSN 250 K307-TS-R 230/240V 50Hz BC2-160

Full product name	BSN 250 K307-TS-R 230/240V 50Hz BC2-160
Full product code	871829120613200
Order code	913700292526
Material Nr. (12NC)	913700292526
Numerator - Quantity Per Pack	1
EAN/UPC - Product/Case	8718291206132
Numerator - Packs per outer box	6
EAN/UPC - Case	8718291206149

# HID-Basic BSN/BMH series for SON/CDO/MH/HPI

## Dimensional drawing



Product	C1	A1	A2	B1
BSN 250 K307-TS-R 230/240V 50Hz	65.0 mm	160.0 mm	139.0 mm	76.0 mm
BC2-160				

