

# HID-Basic BSN/BMH MK4 semi-parallel for SON/CDO/CDM/MH/ HPI

## BSN 70 K301-ITS 220V 60Hz BC1-118

Impregnated electromagnetic copper ballasts for use with an external semi-parallel ignitor for CDM, CDO, MH, HPI (Plus) and SON lamps

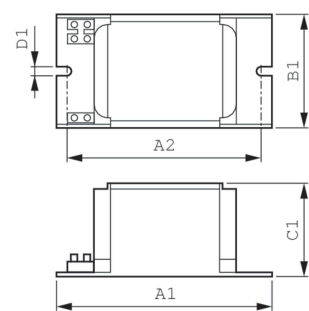
### Product data

Operating and Electrical	
Input Voltage	220 V
Line Frequency	60 Hz
Input Frequency	60 Hz
Wiring	
Connector Type	Screw
Approval and Application	
Approval Marks	CE marking
Product Data	
Order product name	BSN 70 K301-ITS 220V 60Hz BC1-118

Full product name	BSN 70 K301-ITS 220V 60Hz BC1-118
Full product code	871829117724100
Order code	17724100
Material Nr. (12NC)	913700293026
Numerator - Quantity Per Pack	1
EAN/UPC - Product/Case	8718291177241
Numerator - Packs per outer box	6
EAN/UPC - Case	8718291177258

# HID-Basic BSN/BMH MK4 semi-parallel for SON/CDO/CDM/MH/HPI

## Dimensional drawing



Product	D1	C1	A1	A2	B1
BSN 70 K301-ITS 220V 60Hz BC1-118	6.2 mm	52.0 mm	118.0 mm	94.0 mm	61.0 mm

