

Mark 10 Powerline

MARK 10 POWERLINE ELE DIM BALLAST (2) 42W CFL (4-PIN) 120V

For companies looking to make their fixed-output linear T8, 4-pin CFL, and T5/HO fluorescent systems more cost effective and sustainable, Mark 10 Powerline ballasts provide an easy solution without the need for additional control leads. Simply, (1) replace the ballast, (2) replace the switch, (3) dim the lights, that is all it takes. It's that easy to bring the convenience and flexibility of fluorescent dimming to conference rooms, private offices, auditoriums, architectural cove lighting – anywhere dimming is required.

Product data

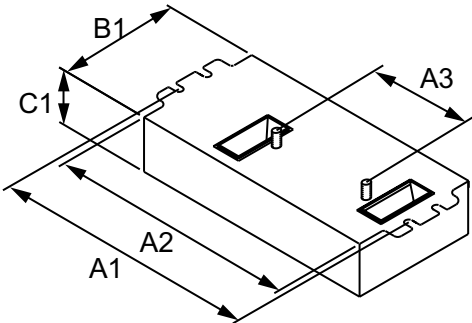
General Information			
Lamp Type	CFTR42W/GX24Q	Input Power (Max)	98 W
Number of Lamps	2 piece/unit	Input Power (Min)	20 W
Ballast Type	Dimmable Fluorescent	Rated Lamp Power	42 W
Base Model	REZ2T42M3BS		
Suitable For Outdoor Use	Yes		
Automatic Restart	Yes		
Operating and Electrical		Wiring	
Input Voltage	120 V	Color Input Terminals	BLK & WHT
Input Frequency	60 Hz	Color Output Terminals	RED, YEL & BLU
Total Harmonic Distortion USA	10 %	Wire Striplength	0.375 mm
Ignition Method	Programmed Start	Control Wire Gauge	NA
Crestfactor (Nom)	1.6	Lamp Connection	Series
Ignition Time (Nom)	1.5 s	Wire Length by Color	No wires
Ballast Factor (Max)	1	Wire Gauge (Nom)	18AWG mm
Ballast Factor (Min)	0.05	Wire Type	Solid
Power Factor (Nom)	0.98	Remote Wiring Configuration Allowed	No
Input Current (Nom)	0.82 A	Tandem Wiring Configuration Allowed	No
		Through Wiring Configuration Allowed	No
		Max Ballast-Lamp Distance Remote Wiring	No Remote
		Max Ballast-Lamp Distance Tandem Wiring	No Tandem
		Max Ballast-Lamp Distance Through Wiring	No Through

Mark 10 Powerline

Connector Type	Poke-In
Temperature	
T-Case Maximum (Nom)	70 °C
Mechanical and Housing	
Housing Material	Metal
Housing	M3
Housing Dimensions	6.28" x 3.0" x 1.29"
Approval and Application	
EMC Immunity Standard	FCC Consumer
Approval Marks	CSA certificate UL certificate CEC Listing RoHS Compliant
Hum And Noise Level	A

UL Recognized	No
Product Data	
Order product name	MARK 10 POWERLINE ELE DIM BALLAST (2) 42W CFL (4-PIN) 120V
EAN/UPC - Product	781087114575
Order code	182196
Local order code	182196
Numerator - Quantity Per Pack	1
Numerator - Packs per outer box	16
Material Nr. (12NC)	913700507881
Net Weight (Piece)	450.000 g

Dimensional drawing



ELE DIM BALLAST (2) 42W CFL (4-PIN) 120V

Product	A1	A2	A3	B1	C1
MARK 10 POWERLINE ELE DIM BALLAST (2) 42W CFL (4-PIN) 120V	6.0 in	5.5 in	2.00 in	3.00 in	1.29 in

