

Core & Coil (71A) MH ~LT~ 175W

**CORE & COIL HID MH BAL 150W M102/142 QUAD
C&C**

The basic ballast is the open core and coil which is most often used as a component within a lighting luminaire. The core and coil also forms the nucleus of Philips Advance's five other ballast configurations.

Product data

General Information	
ANSI Code	M102-M142
Lamp Type	150 MH
Number of Lamps	1 piece/unit
Circuit Type	HX-HPF
Ballast Type	Magnetic HID
Base Model	71A5492
Core Size	3 X 4 (2 LW)
Suitable For Outdoor Use	Yes
Ignitor Catalog Number	LI533-H4
Ignitor Temperature Rating	105°C
Capacitor Value	16 MFD
Capacitor Catalog Number	7C160M30RA
Capacitor Requirements	280V
Capacitor Temperature Rating	105°C
Capacitor Diameter/Oval Dimensions	1.65 in
Capacitor Height	2.75 in
Automatic Restart	No

Operating and Electrical	
Input Voltage	120/208/240/277 V
Input Frequency	60 Hz
Input Current (Open Circuit)	3.5/2.04/1.73/1.52 A
Input Current (Starting)	1.75/1.3/0.85/0.77 A
Input Current (Short Circuit)	1.03-1.41/0.61-0.92/0.49-0.74/0.44-0.67 A
Secondary Short Circuit Current	2.05-2.55 A
Constant Wattage Deviation	12%
Ballast Factor (Nom)	1
Power Factor (Nom)	0.90
Open Circuit Voltage	250 V
Input Current (Nom)	1.6/0.96/0.8/0.7 A A
Input Power (Nom)	185 W
Rated Lamp Power	150 W
Wiring	
Wire Striplength	0.5 mm
Wire Length by Color	12"
Wire Type	Stranded

Core & Coil (71A) MH ~LT~ 175W

Remote Wiring Configuration	Yes
Allowed	
Max Ballast-Lamp Distance	10'
Remote Wiring	
Recommended Fuse Value	10/5/5/4 A

Approval and Application

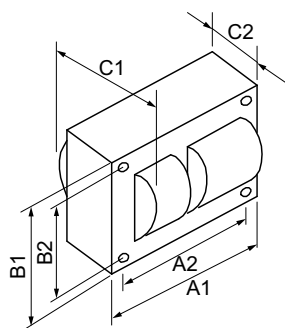
Open Circuit Voltage Test (Volts)	235-290 V
Approval Marks	ULR CSA certificate NOM certificate RoHS Compliant
Temperature Marking	C/B/B/A
UL Recognized	Yes
Hipot Test (1 Minute)	2000 V
Hipot Test (2 Seconds)	2500 V
UL Insulation Class	H(180°C)

UL Temperature Code	1029C
---------------------	-------

Product Data

Order product name	CORE & COIL HID MH BAL 150W M102/142 QUAD C&C
EAN/UPC - Product	781087549254
Order code	913700572409
Numerator - Quantity Per Pack	1
Numerator - Packs per outer box	4
Material Nr. (12NC)	913700572409
Net Weight (Piece)	3.153 kg

Dimensional drawing



MH BAL 150W M102/142 QUAD C&C

Product	C1	C2	A1	A2	B1	B2
CORE & COIL HID 71A5492500D	3.9 in	2.25 in	3.9 in	3.5 in	2.8 in	2.4 in

