



HF-Performer II Xtreme for TL5/TL-D lamps

HF-P XT 280 TL5 EII 220-240V 50/60HZ

HF-Performer Xtreme is a unique X-technology from Philips that guarantees the highest lifetime reliability for lamps and enables an extra-long and reliable HF system life with an energy efficiency index (CELMA EEI) of A2.

Product data

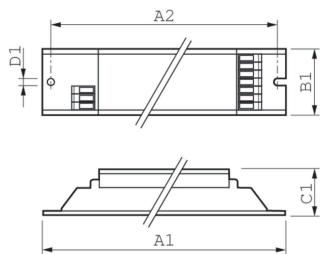
Operating and Electrical		T-case lifetime (nom.)		75 °C
Input Voltage	220 to 240 V	T-Case maximum (max.)		75 °C
Line Frequency	50 to 60 Hz			
Input frequency	50 to 60 Hz	Mechanical and Housing		
Inrush current width	0.370 ms	Housing		L 425x30x28
Inrush current peak (max.)	35 A			
Number of products on MCB (16 A type B) (nom.)	8	Approval and Application		
Wiring		Ingress protection code		IP20 [Finger-protected]
Connector type input terminals	WAGO 251 universal connector [Suitable for both automatic wiring (ALF and ADS) and manual wiring]	Energy efficiency index		A2
Connector type output terminals	WAGO 251 universal connector [Suitable for both automatic wiring (ALF and ADS) and manual wiring]	Safety standard		IEC 61347-2-3
		Environmental standard		ISO 14001
		Approval marks		CE marking ENEC certificate VDE-EMV certificate
Temperature		Product Data		
Ambient temperature range	-25 °C to 60 °C	Order product name		HF-P Xt 280 TL5 EII 220-240V
		Full product name		HF-P XT 280 TL5 EII 220-240V 50/60HZ
		Full EOC		871150091442230
		Order code		91442230

HF-Performer II Xtreme for TL5/TL-D lamps

Material no. (12 NC)	913700630266
Local order code	HFPXT280TL5EII
SAP numerator – quantity per pack	1
EAN/UPC – Product/Case	8711500914422

Numerator – packs per outer box	12
EAN/UPC – Case	8711500914439

Dimensional drawing



Product	D1	C1	A1	A2	B1
HF-P Xt 280 TL5 EII 220-240V	4.2 mm	28.0 mm	425.0 mm	415.0 mm	30.0 mm

