

PrimaVision Twin for CDM

HID-PV C 2x35 /I CDM 220-240V SOFT START

Dual CDM lamp operation, single HID electronic gear – improves cost effectiveness and increases luminaire design flexibility

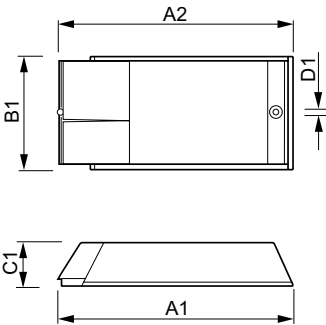
Product data

Operating and Electrical	
Input Voltage	220 to 240 V
Line Frequency	50 to 60 Hz
Input Frequency	50 to 60 Hz
Earth Leakage Current (Max)	0.5 mA
Inrush Current Width	1.85 ms
Inrush Current Peak (Max)	33 A
Number of Products on MCB (16A Type B) (Nom)	20
Wiring	
Cable Length From Device to Lamp	1.5 m
Connector Type	Insert
Temperature	
Ambient temperature range	-20 °C to 55 °C
T-Case Lifetime (Nom)	75 °C
T-Case Maximum (Max)	80 °C
Mechanical and Housing	
Housing	/I

Approval and Application	
Approval Marks	F-Marking CE marking ENEC certificate CB Certificate
Product Data	
Order product name	HID-PV C 2x35 /I CDM 220-240V SOFT START
Full product name	HID-PV C 2x35 /I CDM 220-240V SOFT START
Full product code	872790089704300
Order code	913700656466
Material Nr. (12NC)	913700656466
Numerator - Quantity Per Pack	1
EAN/UPC - Product/Case	8711500881854
Numerator - Packs per outer box	6
EAN/UPC - Case	8727900897043

PrimaVision Twin for CDM

Dimensional drawing



Product	D1	C1	A1	A2	B1
HID-PV C 2x35 /I CDM 220-240V	4.5 mm	35.0 mm	245.0 mm	226.0 mm	94.0 mm
SOFT START					

